

# SCDOT Soil Test Log

<b>Project ID:</b>	CCR2	<b>County:</b>	Richland	<b>Boring No.:</b>	G-128
<b>Site Description:</b>	Carolina Crossroads Phase 2			<b>Route:</b>	N/A
<b>Eng./Geo.:</b>	M. Stanbury	<b>Boring Location:</b>	204+29	<b>Offset:</b>	100 LT
<b>Elev.:</b>	ft	<b>Latitude:</b>		<b>Alignment:</b>	I20CL
<b>Total Depth:</b>	99.2 ft	<b>Soil Depth:</b>	99.2 ft	<b>Date Started:</b>	2/21/2022
<b>Core Depth:</b>	N/A ft	<b>Date Completed:</b>	2/21/2022		
<b>Bore Hole Diameter (in):</b>	2.25	<b>Sampler Configuration</b>		<b>Liner Required:</b>	Y (N)
<b>Drill Machine:</b>	D-50 #439	<b>Drill Method:</b>	RW	<b>Liner Used:</b>	Y (N)
<b>Hammer Type:</b>	Automatic	<b>Energy Ratio:</b>	90.8%		
<b>Core Size:</b>	N/A	<b>Driller:</b>	R. Cassell	<b>Groundwater:</b>	TOB N/A
<b>24HR</b>	29.9 ft				

Elevation (ft)	Depth (ft)	MATERIAL DESCRIPTION	Graphic Log	Sample Depth (ft)	Sample No./Type	1st 6"	2nd 6"	3rd 6"	4th 6"	N Value	● SPT N VALUE ● PL X MC X LL X ▲ FINES CONTENT (%) + RQD (%) ■ REC (%)
	0.0	<b>Artificial Fill</b>									
		Red and Brown, Moist, Stiff, Sandy Clay with Trace Gravel		0.0	SS-153	7	7	8	9	15	●
	3.5			2.0							
	4.5	Brown, Moist, Medium Dense, Clayey Sand		4.0	SS-154	5	6	8	7	14	●
		Red, Moist, Firm, Sandy Clay with Trace Gravel		6.0	SS-155	3	3	3	4	6	●
	7.0			8.0							
		<b>Coastal Plain</b>									
		Orange and Brown, Moist, Hard, Sandy Clay with High Gravel		8.0	SS-156	3	6	8	11	14	●
					SS-157	8	13	21	22	34	●
	13.0										
		Orange, Brown, and White, Moist to Wet, Very Loose to Medium Dense, Clayey Sand with High Gravel		14.2							
					SS-158	6	8	9		17	●
				19.2							
					SS-159	3	5	4		9	●
				24.2							
					SS-160	3	3	4		7	●
				29.2							
					SS-161	2	2	2		4	●
				34.2							
						3	3	3		6	●
	36.0										
		<b>Residual</b> Brown, Gray, and Black, Moist, Stiff, Saprolitic, Sandy Silt		39.2							
					SS-162	5	6	7		13	●
	41.0										
		Gray, Brown, and Black, Moist, Very Stiff to Hard, Saprolitic, Clayey Silt		44.2							●

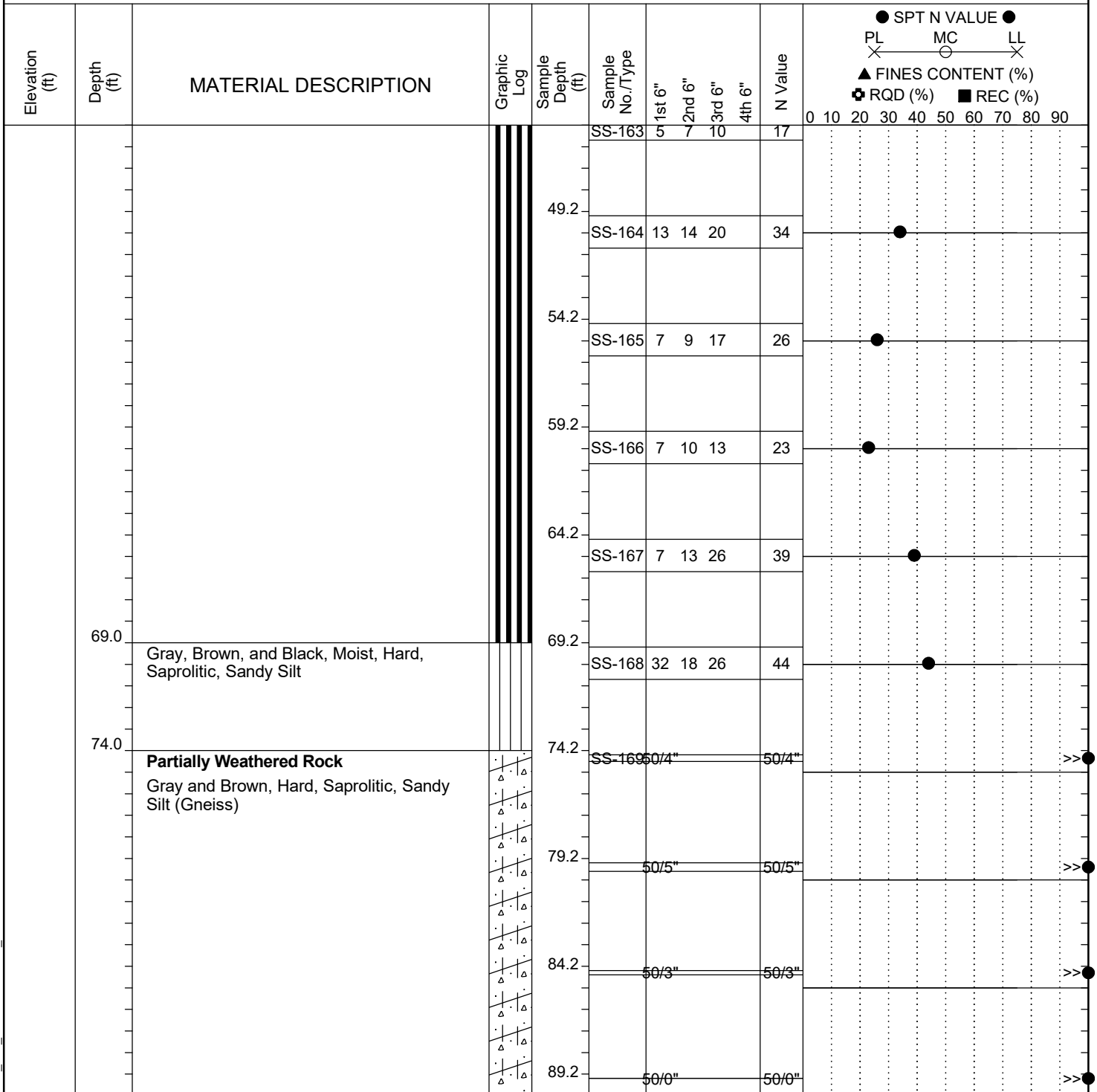
## LEGEND

Continued Next Page

SAMPLER TYPE		DRILLING METHOD	
SS - Split Spoon	NQ - Rock Core, 1-7/8"	HSA - Hollow Stem Auger	RW - Rotary Wash
UD - Undisturbed Sample	CU - Cuttings	CFA - Continuous Flight Augers	RC - Rock Core
AWG - Rock Core, 1-1/8"	CT - Continuous Tube	DC - Driving Casing	

# SCDOT Soil Test Log

<b>Project ID:</b>	CCR2	<b>County:</b>	Richland	<b>Boring No.:</b>	G-128
<b>Site Description:</b>	Carolina Crossroads Phase 2			<b>Route:</b>	N/A
<b>Eng./Geo.:</b>	M. Stanbury	<b>Boring Location:</b>	204+29	<b>Offset:</b>	100 LT
<b>Elev.:</b>	ft	<b>Latitude:</b>		<b>Alignment:</b>	I20CL
<b>Total Depth:</b>	99.2 ft	<b>Soil Depth:</b>	99.2 ft	<b>Date Started:</b>	2/21/2022
<b>Core Depth:</b>	N/A ft	<b>Date Completed:</b>	2/21/2022		
<b>Bore Hole Diameter (in):</b>	2.25	<b>Sampler Configuration</b>		<b>Liner Required:</b>	Y (N)
<b>Drill Machine:</b>	D-50 #439	<b>Drill Method:</b>	RW	<b>Liner Used:</b>	Y (N)
<b>Hammer Type:</b>	Automatic	<b>Energy Ratio:</b>	90.8%		
<b>Core Size:</b>	N/A	<b>Driller:</b>	R. Cassell	<b>Groundwater:</b>	TOB N/A
		<b>24HR</b>	29.9 ft		



## LEGEND

Continued Next Page

SAMPLER TYPE		DRILLING METHOD	
SS - Split Spoon	NQ - Rock Core, 1-7/8"	HSA - Hollow Stem Auger	RW - Rotary Wash
UD - Undisturbed Sample	CU - Cuttings	CFA - Continuous Flight Augers	RC - Rock Core
AWG - Rock Core, 1-1/8"	CT - Continuous Tube	DC - Driving Casing	

# SCDOT Soil Test Log

<b>Project ID:</b>	CCR2	<b>County:</b>	Richland	<b>Boring No.:</b>	G-128
<b>Site Description:</b>	Carolina Crossroads Phase 2			<b>Route:</b>	N/A
<b>Eng./Geo.:</b>	M. Stanbury	<b>Boring Location:</b>	204+29	<b>Offset:</b>	100 LT
<b>Alignment:</b>	I20CL				
<b>Elev.:</b>	ft	<b>Latitude:</b>		<b>Longitude:</b>	
<b>Date Started:</b>	2/21/2022				
<b>Total Depth:</b>	99.2 ft	<b>Soil Depth:</b>	99.2 ft	<b>Core Depth:</b>	N/A ft
<b>Date Completed:</b>	2/21/2022				
<b>Bore Hole Diameter (in):</b>	2.25	<b>Sampler Configuration</b>		<b>Liner Required:</b>	Y (N)
<b>Liner Used:</b>	Y (N)				
<b>Drill Machine:</b>	D-50 #439	<b>Drill Method:</b>	RW	<b>Hammer Type:</b>	Automatic
<b>Energy Ratio:</b>	90.8%				
<b>Core Size:</b>	N/A	<b>Driller:</b>	R. Cassell	<b>Groundwater:</b>	TOB N/A
<b>24HR</b>	29.9 ft				

Elevation (ft)	Depth (ft)	MATERIAL DESCRIPTION	Graphic Log	Sample Depth (ft)	Sample No./Type	1st 6"	2nd 6"	3rd 6"	4th 6"	N Value	<div> <div> ● SPT N VALUE ● </div> <div> PL MC LL </div> <div> X X X </div> <div> ▲ FINES CONTENT (%) </div> <div> + RQD (%) ■ REC (%) </div> </div>
				94.2	SS-170	28	50/3"			50/3"	>>●
	99.2	Boring Terminated at 99.2 Feet		99.2		50/0"				50/0"	>>●

## LEGEND

SAMPLER TYPE		DRILLING METHOD	
SS - Split Spoon	NQ - Rock Core, 1-7/8"	HSA - Hollow Stem Auger	RW - Rotary Wash
UD - Undisturbed Sample	CU - Cuttings	CFA - Continuous Flight Augers	RC - Rock Core
AWG - Rock Core, 1-1/8"	CT - Continuous Tube	DC - Driving Casing	

# SCDOT Soil Test Log

<b>Project ID:</b>	CCR2	<b>County:</b>	Richland	<b>Boring No.:</b>	G-129
<b>Site Description:</b>	Carolina Crossroads Phase 2			<b>Route:</b>	N/A
<b>Eng./Geo.:</b>	M. Stanbury	<b>Boring Location:</b>	204+23	<b>Offset:</b>	130 LT
<b>Elev.:</b>	ft	<b>Latitude:</b>		<b>Alignment:</b>	I20CL
<b>Total Depth:</b>	64.5 ft	<b>Soil Depth:</b>	64.5 ft	<b>Date Started:</b>	2/22/2022
<b>Core Depth:</b>	N/A ft	<b>Date Completed:</b>	2/22/2022		
<b>Bore Hole Diameter (in):</b>	2.25	<b>Sampler Configuration</b>		<b>Liner Required:</b>	Y (N)
<b>Drill Machine:</b>	D-50 #439	<b>Drill Method:</b>	RW	<b>Liner Used:</b>	Y (N)
<b>Hammer Type:</b>	Automatic	<b>Energy Ratio:</b>	90.8%		
<b>Core Size:</b>	N/A	<b>Driller:</b>	R. Cassell	<b>Groundwater:</b>	TOB N/A
		<b>24HR</b>	30.8 ft		

Elevation (ft)	Depth (ft)	MATERIAL DESCRIPTION	Graphic Log	Sample Depth (ft)	Sample No./Type	1st 6"	2nd 6"	3rd 6"	4th 6"	N Value	● SPT N VALUE ● PL X MC X LL X ▲ FINES CONTENT (%) + RQD (%) ■ REC (%)
	0.0										0 10 20 30 40 50 60 70 80 90
	1.5	Artificial Fill Brown, Red, and Orange, Moist, Medium Dense, Clayey Sand with Some Gravel		0.0	SS-171	5	10	9	9	19	●
	4.0	Coastal Plain Red and Orange, Moist, Medium Dense, Clayey Sand with Trace Gravel		2.0	SS-172	6	8	8	10	16	●
	6.5	Red, Moist, Soft, Sandy Clay		4.0	SS-173	3	2	3	3	5	●
	7.5	Red and Brown, Moist, Dense, Clayey Sand		6.0	SS-174	12	14	22	28	36	●
		Red and Orange, Moist, Hard, Sandy Clay with Some Gravel		8.0	SS-175	15	18	21	24	39	●
	13.0	Brown, Moist to Wet, Very Loose to Medium Dense, Clayey Sand with Trace Gravel		14.2	SS-176	7	6	7		13	●
				19.2	SS-177	3	4	4		8	●
				24.2	SS-178	3	3	3		6	●
				29.2	SS-179	2	3	3		6	●
				34.2	SS-180	1	2	3		5	●
				39.2	SS-181	2	2	2		4	●
	42.0	Residual		44.2							●
		Brown and Gray, Moist, Soft, Saprolitic,									

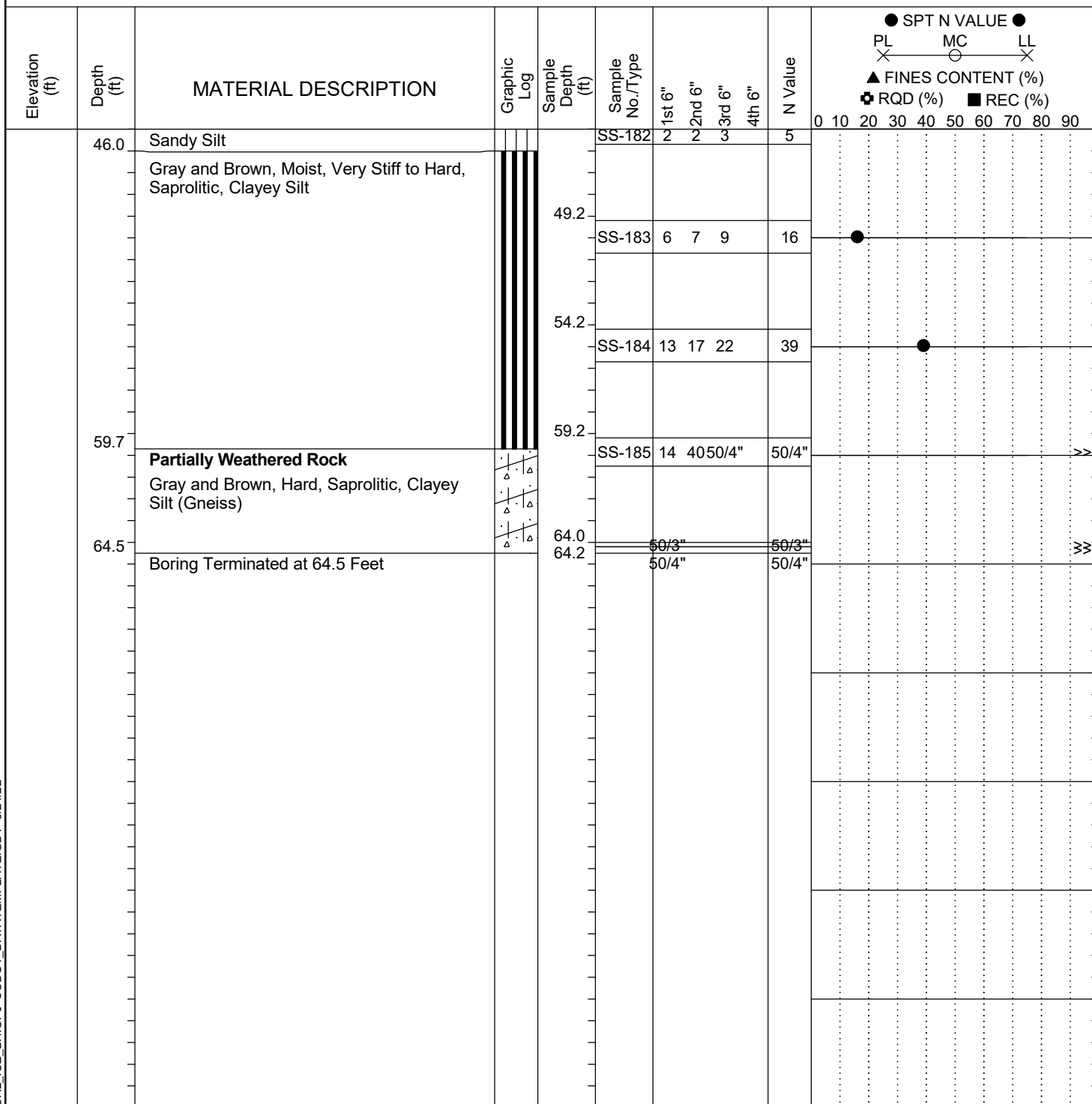
## LEGEND

Continued Next Page

SAMPLER TYPE		DRILLING METHOD	
SS - Split Spoon	NQ - Rock Core, 1-7/8"	HSA - Hollow Stem Auger	RW - Rotary Wash
UD - Undisturbed Sample	CU - Cuttings	CFA - Continuous Flight Augers	RC - Rock Core
AWG - Rock Core, 1-1/8"	CT - Continuous Tube	DC - Driving Casing	

# SCDOT Soil Test Log

Project ID:	CCR2				County:	Richland		Boring No.:	G-129		
Site Description:	Carolina Crossroads Phase 2							Route:	N/A		
Eng./Geo.:	M. Stanbury		Boring Location:	204+23		Offset:	130 LT	Alignment:	I20CL		
Elev.:	ft		Latitude:			Longitude:			Date Started:	2/22/2022	
Total Depth:	64.5 ft		Soil Depth:	64.5 ft		Core Depth:	N/A ft		Date Completed:	2/22/2022	
Bore Hole Diameter (in):	2.25		Sampler Configuration			Liner Required:	Y (N)		Liner Used:	Y (N)	
Drill Machine:	D-50 #439		Drill Method:	RW		Hammer Type:	Automatic		Energy Ratio:	90.8%	
Core Size:	N/A		Driller:	R. Cassell		Groundwater:	TOB	N/A		24HR	30.8 ft

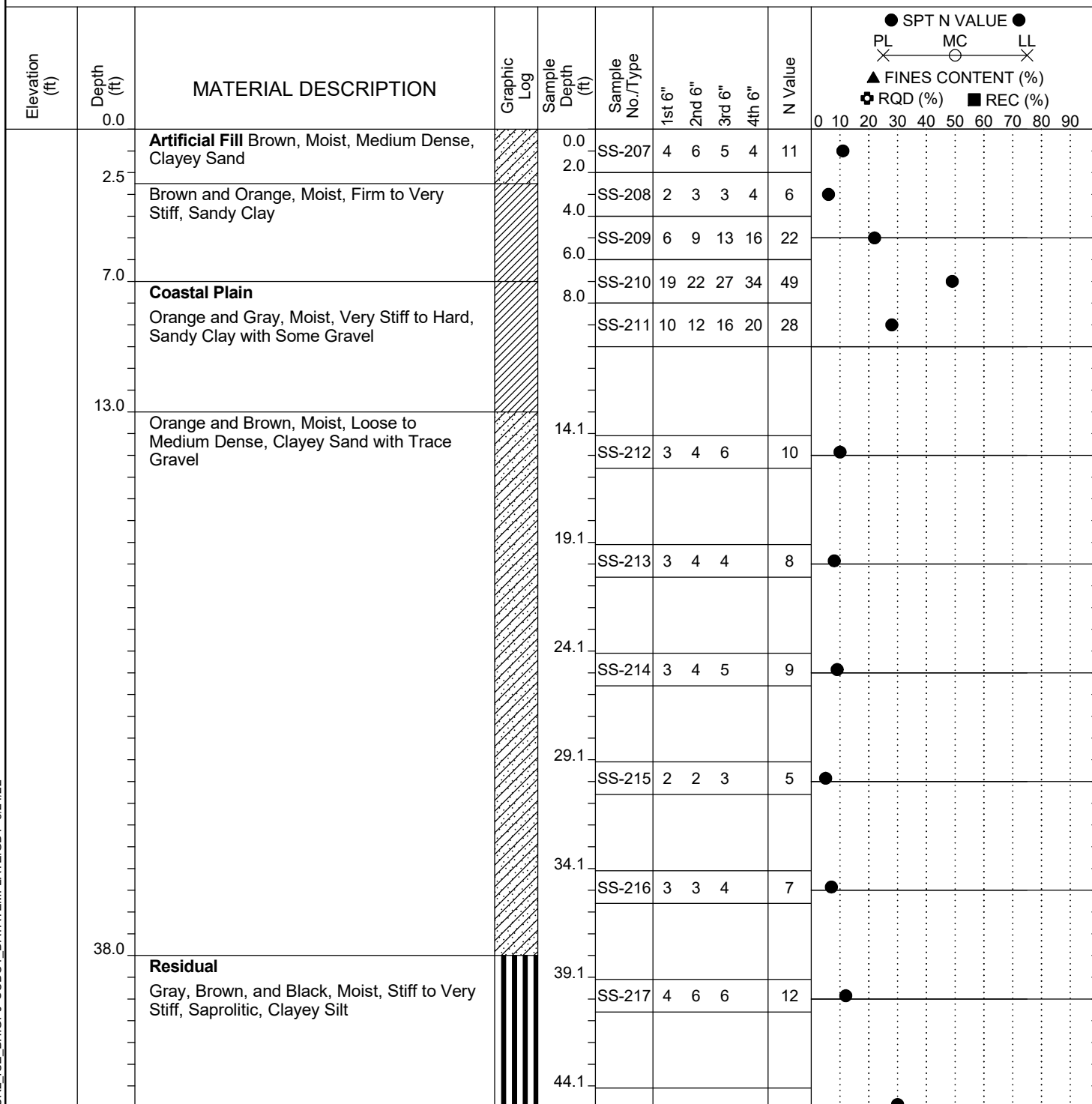


## LEGEND

SAMPLER TYPE		DRILLING METHOD	
SS - Split Spoon	NQ - Rock Core, 1-7/8"	HSA - Hollow Stem Auger	RW - Rotary Wash
UD - Undisturbed Sample	CU - Cuttings	CFA - Continuous Flight Augers	RC - Rock Core
AWG - Rock Core, 1-1/8"	CT - Continuous Tube	DC - Driving Casing	

# SCDOT Soil Test Log

<b>Project ID:</b>	CCR2	<b>County:</b>	Richland	<b>Boring No.:</b>	G-130
<b>Site Description:</b>	Carolina Crossroads Phase 2			<b>Route:</b>	N/A
<b>Eng./Geo.:</b>	M. Stanbury	<b>Boring Location:</b>	205+00	<b>Offset:</b>	104 LT
<b>Elev.:</b>	ft	<b>Latitude:</b>		<b>Alignment:</b>	I20CL
<b>Total Depth:</b>	70.5 ft	<b>Soil Depth:</b>	70.5 ft	<b>Date Started:</b>	2/24/2022
<b>Core Depth:</b>	N/A ft	<b>Date Completed:</b>	2/24/2022		
<b>Bore Hole Diameter (in):</b>	2.25	<b>Sampler Configuration</b>		<b>Liner Required:</b>	Y (N)
<b>Drill Machine:</b>	D-50 #439	<b>Drill Method:</b>	RW	<b>Liner Used:</b>	Y (N)
<b>Hammer Type:</b>	Automatic	<b>Energy Ratio:</b>	90.8%		
<b>Core Size:</b>	N/A	<b>Driller:</b>	R. Cassell	<b>Groundwater:</b>	TOB N/A
		<b>24HR</b>	29.1 ft		



## LEGEND

Continued Next Page

SAMPLER TYPE		DRILLING METHOD	
SS - Split Spoon	NQ - Rock Core, 1-7/8"	HSA - Hollow Stem Auger	RW - Rotary Wash
UD - Undisturbed Sample	CU - Cuttings	CFA - Continuous Flight Augers	RC - Rock Core
AWG - Rock Core, 1-1/8"	CT - Continuous Tube	DC - Driving Casing	

# SCDOT Soil Test Log

Project ID:	CCR2				County:	Richland		Boring No.:	G-130		
Site Description:	Carolina Crossroads Phase 2							Route:	N/A		
Eng./Geo.:	M. Stanbury		Boring Location:	205+00		Offset:	104 LT	Alignment:	I20CL		
Elev.:	ft		Latitude:			Longitude:			Date Started:	2/24/2022	
Total Depth:	70.5 ft		Soil Depth:	70.5 ft		Core Depth:	N/A ft		Date Completed:	2/24/2022	
Bore Hole Diameter (in):	2.25		Sampler Configuration			Liner Required:	Y (N)		Liner Used:	Y (N)	
Drill Machine:	D-50 #439		Drill Method:	RW		Hammer Type:	Automatic		Energy Ratio:	90.8%	
Core Size:	N/A		Driller:	R. Cassell		Groundwater:	TOB	N/A		24HR	29.1 ft

Elevation (ft)	Depth (ft)	MATERIAL DESCRIPTION	Graphic Log	Sample Depth (ft)	Sample No./Type	1st 6"	2nd 6"	3rd 6"	4th 6"	N Value	● SPT N VALUE ● PL — MC — LL X — X — X ▲ FINES CONTENT (%) + RQD (%) ■ REC (%)
	49.0	<b>Partially Weathered Rock</b> Gray and Brown, Hard, Saprolitic, Sandy Silt (Gneiss)		49.1	SS-218	12	13	17		30	
					SS-219	2550/5"				50/5"	>>●
	54.1					4750/4"				50/4"	>>●
	58.0	<b>Residual</b> Gray and Brown, Moist, Hard, Saprolitic, Sandy Silt		59.1	SS-220	10	20	37		57	●
	64.5	<b>Partially Weathered Rock</b> Gray and Brown, Hard, Saprolitic, Sandy Silt (Gneiss)		64.1	SS-221	3250/5"				50/5"	>>●
	70.5	Boring Terminated at 70.5 Feet		69.1		13	1650/5"			50/5"	>>●

## LEGEND

SAMPLER TYPE		DRILLING METHOD	
SS - Split Spoon	NQ - Rock Core, 1-7/8"	HSA - Hollow Stem Auger	RW - Rotary Wash
UD - Undisturbed Sample	CU - Cuttings	CFA - Continuous Flight Augers	RC - Rock Core
AWG - Rock Core, 1-1/8"	CT - Continuous Tube	DC - Driving Casing	

# SCDOT Soil Test Log

<b>Project ID:</b>	CCR2	<b>County:</b>	Richland	<b>Boring No.:</b>	G-131
<b>Site Description:</b>	Carolina Crossroads Phase 2			<b>Route:</b>	N/A
<b>Eng./Geo.:</b>	M. Stanbury	<b>Boring Location:</b>	613+99	<b>Offset:</b>	100 LT
<b>Elev.:</b>	318.0 ft	<b>Latitude:</b>		<b>Date Started:</b>	2/23/2022
<b>Total Depth:</b>	109.2 ft	<b>Soil Depth:</b>	109.2 ft	<b>Date Completed:</b>	2/23/2022
<b>Bore Hole Diameter (in):</b>	2.25	<b>Sampler Configuration</b>		<b>Liner Required:</b>	Y (N)
<b>Drill Machine:</b>	D-50 #439	<b>Drill Method:</b>	RW	<b>Hammer Type:</b>	Automatic
<b>Core Size:</b>	N/A	<b>Driller:</b>	R. Cassell	<b>Energy Ratio:</b>	90.8%
		<b>Groundwater:</b>	TOB	<b>24HR</b>	31.1 ft

Elevation (ft)	Depth (ft)	MATERIAL DESCRIPTION	Graphic Log	Sample Depth (ft)	Sample No./Type	1st 6"	2nd 6"	3rd 6"	4th 6"	N Value	● SPT N VALUE ● PL X MC X LL X ▲ FINES CONTENT (%) + RQD (%) ■ REC (%)
	0.0	<b>Artificial Fill</b> Red and Brown, Moist, Stiff, Sandy Clay with Trace Gravel		0.0	SS-186	4	5	6	7	11	●
	2.5			2.0							
	4.0	Brown and Red, Moist, Loose, Clayey Sand with Trace Gravel		4.0	SS-187	3	3	4	7	7	●
313.0		<b>Coastal Plain</b>		6.0	SS-188	5	3	4	8	7	●
		Red and Brown, Moist, Firm to Hard, Sandy Clay with High Gravel		8.0	SS-189	17	22	24	30	46	●
308.0					SS-190	5	9	10	15	19	●
				14.2							
303.0					SS-191	6	9	10		19	●
	17.0			19.2							
298.0		Orange and Brown, Moist, Loose to Medium Dense, Clayey Sand with Trace Gravel			SS-192	4	5	6		11	●
				24.2							
293.0					SS-193	3	4	5		9	●
				29.2							
288.0					SS-194	3	3	3		6	●
				34.2							
283.0					SS-195	3	4	3		7	●
				39.2							
278.0					SS-196	3	4	4		8	●
	43.0			44.2							●
		<b>Residual</b> Brown and Gray, Moist, Firm to Hard, Saprolitic, Clayey Silt									

## LEGEND

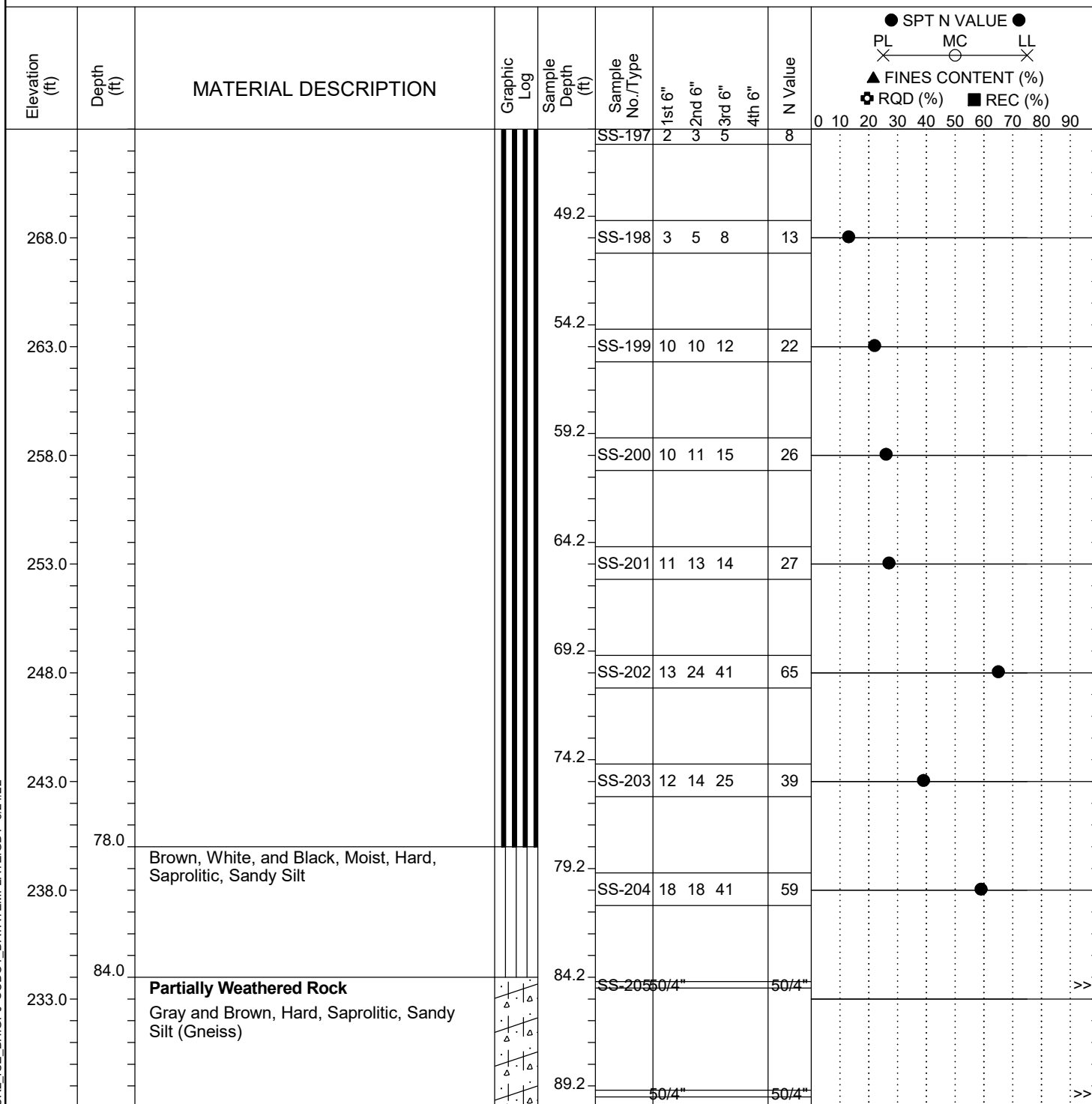
Continued Next Page

SAMPLER TYPE		DRILLING METHOD	
SS - Split Spoon	NQ - Rock Core, 1-7/8"	HSA - Hollow Stem Auger	RW - Rotary Wash
UD - Undisturbed Sample	CU - Cuttings	CFA - Continuous Flight Augers	RC - Rock Core
AWG - Rock Core, 1-1/8"	CT - Continuous Tube	DC - Driving Casing	



# SCDOT Soil Test Log

Project ID:	CCR2				County:	Richland		Boring No.:	G-131				
Site Description:		Carolina Crossroads Phase 2							Route:	N/A			
Eng./Geo.:	M. Stanbury		Boring Location:			613+99		Offset:	100 LT	Alignment:	US176WB		
Elev.:	318.0 ft		Latitude:				Longitude:				Date Started:	2/23/2022	
Total Depth:		109.2 ft		Soil Depth:		109.2 ft		Core Depth:		N/A ft		Date Completed:	2/23/2022
Bore Hole Diameter (in):			2.25		Sampler Configuration			Liner Required:		Y (N)		Liner Used:	Y (N)
Drill Machine:		D-50 #439		Drill Method:		RW		Hammer Type:		Automatic		Energy Ratio:	90.8%
Core Size:		N/A		Driller:		R. Cassell		Groundwater:		TOB N/A		24HR	31.1 ft



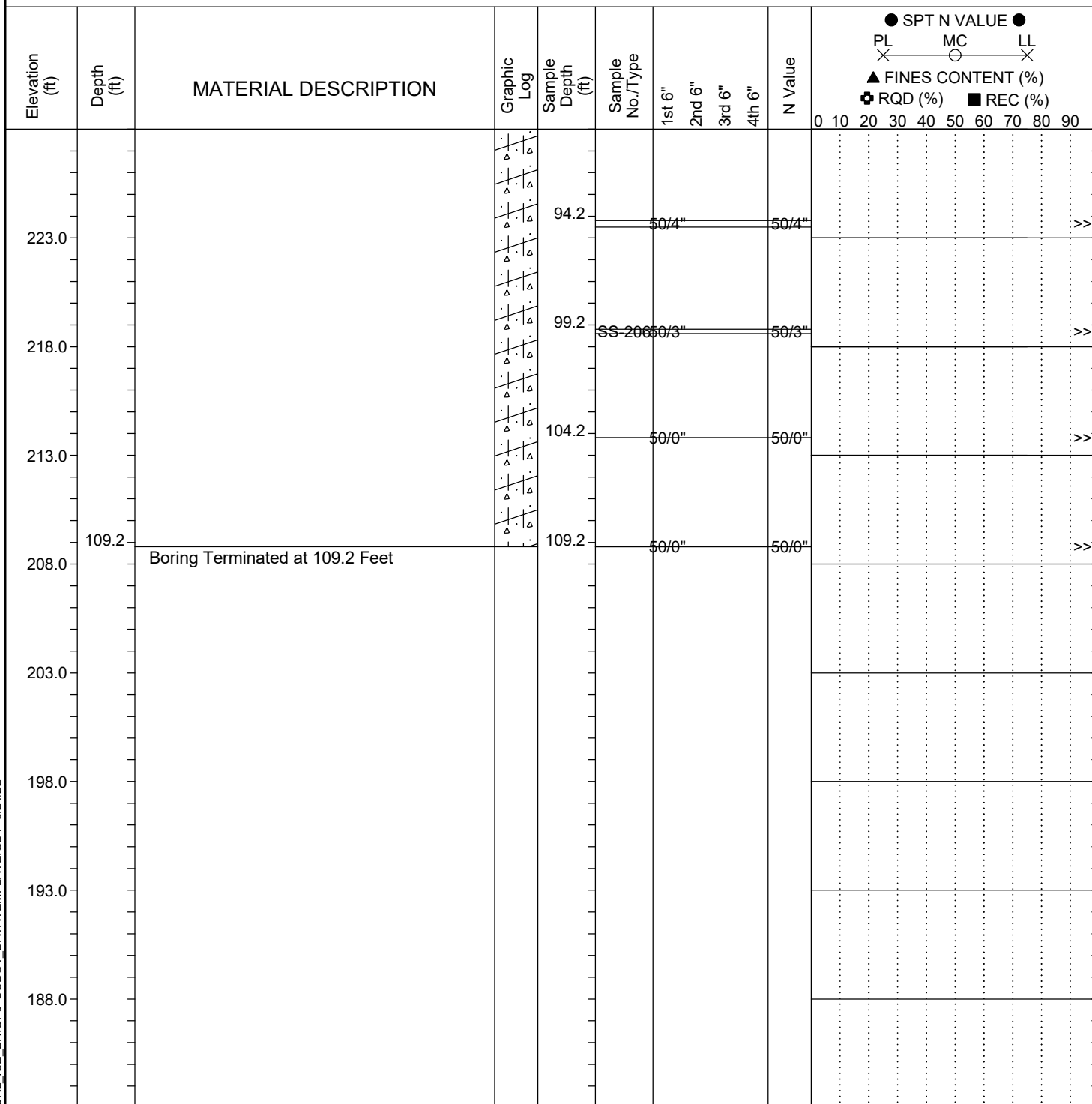
## LEGEND

Continued Next Page

SAMPLER TYPE		DRILLING METHOD	
SS - Split Spoon	NQ - Rock Core, 1-7/8"	HSA - Hollow Stem Auger	RW - Rotary Wash
UD - Undisturbed Sample	CU - Cuttings	CFA - Continuous Flight Augers	RC - Rock Core
AWG - Rock Core, 1-1/8"	CT - Continuous Tube	DC - Driving Casing	

# SCDOT Soil Test Log

Project ID:	CCR2				County:	Richland		Boring No.:	G-131		
Site Description:	Carolina Crossroads Phase 2							Route:	N/A		
Eng./Geo.:	M. Stanbury		Boring Location:	613+99		Offset:	100 LT	Alignment:	US176WB		
Elev.:	318.0 ft		Latitude:			Longitude:			Date Started:	2/23/2022	
Total Depth:	109.2 ft		Soil Depth:	109.2 ft		Core Depth:	N/A ft		Date Completed:	2/23/2022	
Bore Hole Diameter (in):	2.25		Sampler Configuration			Liner Required:	Y (N)		Liner Used:	Y (N)	
Drill Machine:	D-50 #439		Drill Method:	RW		Hammer Type:	Automatic		Energy Ratio:	90.8%	
Core Size:	N/A		Driller:	R. Cassell		Groundwater:	TOB	N/A		24HR	31.1 ft



## LEGEND

SAMPLER TYPE		DRILLING METHOD	
SS - Split Spoon	NQ - Rock Core, 1-7/8"	HSA - Hollow Stem Auger	RW - Rotary Wash
UD - Undisturbed Sample	CU - Cuttings	CFA - Continuous Flight Augers	RC - Rock Core
AWG - Rock Core, 1-1/8"	CT - Continuous Tube	DC - Driving Casing	

SC DOT 20-81\_CCR2\_ICE\_BH.GPJ SCDOT DATATEMPLATE.GDT 3/24/22

# SCDOT Soil Test Log

<b>Project ID:</b> CCR2		<b>County:</b> Richland		<b>Boring No.:</b> G-134	
<b>Site Description:</b> Carolina Crossroads Phase 2				<b>Route:</b>	
<b>Eng./Geo.:</b> M. Stanbury		<b>Boring Location:</b>		<b>Offset:</b>	
<b>Elev.:</b> ft		<b>Latitude:</b>		<b>Date Started:</b> 3/14/2022	
<b>Total Depth:</b> 73.7 ft		<b>Soil Depth:</b> 73.7 ft		<b>Date Completed:</b> 3/14/2022	
<b>Bore Hole Diameter (in):</b> 2.25		<b>Sampler Configuration</b>		<b>Liner Required:</b> Y (N)	
<b>Drill Machine:</b> D-50 #439		<b>Drill Method:</b> RW		<b>Energy Ratio:</b> 90.8%	
<b>Core Size:</b> N/A		<b>Driller:</b> R. Cassell		<b>Groundwater:</b> TOB N/A	
				<b>24HR</b> FIAD	

Elevation (ft)	Depth (ft)	MATERIAL DESCRIPTION	Graphic Log	Sample Depth (ft)	Sample No./Type	1st 6"	2nd 6"	3rd 6"	4th 6"	N Value	● SPT N VALUE ● PL X MC X LL X ▲ FINES CONTENT (%) + RQD (%) ■ REC (%)
	0.0	<b>Asphalt</b>									0 10 20 30 40 50 60 70 80 90
	1.3	<b>Artificial Fill</b>		1.3							
		Brown, Moist, Very Stiff, Sandy Clay with Some Gravel			SS-332	5	6	12	15	18	●
	4.0			4.0							
	6.0			6.0	SS-333	6	7	9	9	16	●
	6.5	<b>Coastal Plain</b>		6.5							
		Brown, Gray, and Orange, Moist, Loose to Medium Dense, Clayey Sand with High Gravel			SS-334	5	6	7	8	13	●
	8.0			8.0	SS-335	4	5	6	6	11	●
	13.7			13.7							
					SS-336	5	5	5		10	●
	18.7			18.7							
					SS-337	3	3	4		7	●
	23.7			23.7							
					SS-338	2	3	4		7	●
	25.0	<b>Residual</b>		25.0							
		Red, Gray, Brown, Orange, and Black, Moist, Stiff to Very Stiff, Saprolitic, Clayey Silt									
	28.7			28.7							
					SS-339	2	3	5		8	●
	33.7			33.7							
					SS-340	3	4	5		9	●
	38.7			38.7							
					SS-341	3	4	7		11	●
	43.7			43.7							
					SS-342	7	10	15		25	●

## LEGEND

Continued Next Page

SAMPLER TYPE		DRILLING METHOD	
SS - Split Spoon	NQ - Rock Core, 1-7/8"	HSA - Hollow Stem Auger	RW - Rotary Wash
UD - Undisturbed Sample	CU - Cuttings	CFA - Continuous Flight Augers	RC - Rock Core
AWG - Rock Core, 1-1/8"	CT - Continuous Tube	DC - Driving Casing	

# SCDOT Soil Test Log

<b>Project ID:</b> CCR2		<b>County:</b> Richland		<b>Boring No.:</b> G-134	
<b>Site Description:</b> Carolina Crossroads Phase 2				<b>Route:</b>	
<b>Eng./Geo.:</b> M. Stanbury		<b>Boring Location:</b>		<b>Offset:</b>	
<b>Elev.:</b> ft		<b>Latitude:</b>		<b>Date Started:</b> 3/14/2022	
<b>Total Depth:</b> 73.7 ft		<b>Soil Depth:</b> 73.7 ft		<b>Date Completed:</b> 3/14/2022	
<b>Bore Hole Diameter (in):</b> 2.25		<b>Sampler Configuration</b>		<b>Liner Required:</b> Y (N)	
<b>Drill Machine:</b> D-50 #439		<b>Drill Method:</b> RW		<b>Energy Ratio:</b> 90.8%	
<b>Core Size:</b> N/A		<b>Driller:</b> R. Cassell		<b>Groundwater:</b> TOB N/A	
				<b>24HR</b> FIAD	

Elevation (ft)	Depth (ft)	MATERIAL DESCRIPTION	Graphic Log	Sample Depth (ft)	Sample No./Type	1st 6"	2nd 6"	3rd 6"	4th 6"	N Value	<div> <div> ● SPT N VALUE ● </div> <div> PL MC LL </div> <div> ▲ FINES CONTENT (%) </div> <div> ⊕ RQD (%) ■ REC (%) </div> </div>
46.0		<b>Partially Weathered Rock</b> Gray and Brown, Hard, Saprolitic, Sandy Silt (Gneiss)									
				48.7	SS-343	36	50/4"			50/4"	>>●
				53.7		20	36	50/4"		50/4"	>>●
				58.7	SS-344	28	45	50/5"		50/5"	>>●
				63.7		50/2"				50/2"	>>●
				68.7		50/2"				50/2"	>>●
	73.7	Boring Terminated at 73.7 Feet		73.7		50/0"				50/0"	>>●

## LEGEND

SAMPLER TYPE		DRILLING METHOD	
SS - Split Spoon	NQ - Rock Core, 1-7/8"	HSA - Hollow Stem Auger	RW - Rotary Wash
UD - Undisturbed Sample	CU - Cuttings	CFA - Continuous Flight Augers	RC - Rock Core
AWG - Rock Core, 1-1/8"	CT - Continuous Tube	DC - Driving Casing	

# SCDOT Soil Test Log

<b>Project ID:</b>	CCR2	<b>County:</b>	Richland	<b>Boring No.:</b>	G-135
<b>Site Description:</b>	Carolina Crossroads Phase 2			<b>Route:</b>	
<b>Eng./Geo.:</b>	M. Stanbury	<b>Boring Location:</b>		<b>Offset:</b>	
<b>Elev.:</b>	ft	<b>Latitude:</b>		<b>Longitude:</b>	
<b>Total Depth:</b>	73.7 ft	<b>Soil Depth:</b>	73.7 ft	<b>Core Depth:</b>	N/A ft
<b>Date Started:</b>	3/15/2022			<b>Date Completed:</b>	3/15/2022
<b>Bore Hole Diameter (in):</b>	2.25	<b>Sampler Configuration</b>		<b>Liner Required:</b>	Y (N)
<b>Liner Used:</b>	Y (N)	<b>Drill Machine:</b>	D-50 #439	<b>Drill Method:</b>	RW
<b>Hammer Type:</b>	Automatic	<b>Energy Ratio:</b>	90.8%		
<b>Core Size:</b>	N/A	<b>Driller:</b>	R. Cassell	<b>Groundwater:</b>	TOB N/A
<b>24HR</b>	FIAD				

Elevation (ft)	Depth (ft)	MATERIAL DESCRIPTION	Graphic Log	Sample Depth (ft)	Sample No./Type	1st 6"	2nd 6"	3rd 6"	4th 6"	N Value	● SPT N VALUE ● PL X MC X LL X ▲ FINES CONTENT (%) + RQD (%) ■ REC (%)
	0.0	<b>Asphalt</b>									
	1.3	<b>Artificial Fill</b>		1.3							
		Brown and Orange, Moist, Stiff to Very Stiff, Sandy Clay with Some Gravel			SS-345	2	5	9	12	14	
	4.0			4.0							
					SS-346	8	10	12	15	22	
	6.0			6.0							
					SS-347	7	8	10	12	18	
	8.0			8.0							
		<b>Coastal Plain</b>			SS-348	3	4	6	6	10	
		Orange and Brown, Moist, Loose to Medium Dense, Clayey Sand with Trace Gravel									
	13.7			13.7							
					SS-349	4	4	4		8	
	18.7			18.7							
					SS-350	2	3	4		7	
	23.7			23.7							
					SS-351	3	3	3		6	
	28.7			28.7							
					SS-352	2	5	8		13	
	33.0			33.0							
		<b>Residual</b>									
		Brown, Gray, and Black, Moist, Firm to Stiff, Saprolitic, Clayey Silt									
	38.7			38.7							
					SS-353	6	8	10		18	
	42.0			42.0							
					SS-354	2	4	4		8	
	43.7			43.7							
		<b>Gray and Brown, Moist, Very Stiff to Hard, Saprolitic, Clayey Silt</b>			SS-355	6	7	10		17	

## LEGEND

Continued Next Page

SAMPLER TYPE		DRILLING METHOD	
SS - Split Spoon	NQ - Rock Core, 1-7/8"	HSA - Hollow Stem Auger	RW - Rotary Wash
UD - Undisturbed Sample	CU - Cuttings	CFA - Continuous Flight Augers	RC - Rock Core
AWG - Rock Core, 1-1/8"	CT - Continuous Tube	DC - Driving Casing	

# SCDOT Soil Test Log

<b>Project ID:</b> CCR2		<b>County:</b> Richland		<b>Boring No.:</b> G-135	
<b>Site Description:</b> Carolina Crossroads Phase 2				<b>Route:</b>	
<b>Eng./Geo.:</b> M. Stanbury		<b>Boring Location:</b>		<b>Offset:</b>	
<b>Elev.:</b> ft		<b>Latitude:</b>		<b>Longitude:</b>	
<b>Total Depth:</b> 73.7 ft		<b>Soil Depth:</b> 73.7 ft		<b>Core Depth:</b> N/A ft	
<b>Bore Hole Diameter (in):</b> 2.25		<b>Sampler Configuration</b>		<b>Liner Required:</b> Y (N)	
<b>Drill Machine:</b> D-50 #439		<b>Drill Method:</b> RW		<b>Energy Ratio:</b> 90.8%	
<b>Core Size:</b> N/A		<b>Driller:</b> R. Cassell		<b>Groundwater:</b> TOB N/A	

Elevation (ft)	Depth (ft)	MATERIAL DESCRIPTION	Graphic Log	Sample Depth (ft)	Sample No./Type	1st 6"	2nd 6"	3rd 6"	4th 6"	N Value	<div> <div> ● SPT N VALUE ● </div> <div> PL MC LL </div> <div> ▲ FINES CONTENT (%) </div> <div> + RQD (%) ■ REC (%) </div> </div>
	48.7				SS-356	13	21	40		61	
	53.0	Partially Weathered Rock Gray and Brown, Hard, Saprolitic, Sandy Silt (Gneiss)		53.7	SS-357	23 50/4"				50/4"	>>●
	58.7					32 50/4"				50/4"	>>●
	63.7				SS-358	23 30 50/4"				50/4"	>>●
	68.7					50/4"				50/4"	>>●
	73.7	Boring Terminated at 73.7 Feet		73.7		50/6"				50/6"	>>●

## LEGEND

SAMPLER TYPE		DRILLING METHOD	
SS - Split Spoon	NQ - Rock Core, 1-7/8"	HSA - Hollow Stem Auger	RW - Rotary Wash
UD - Undisturbed Sample	CU - Cuttings	CFA - Continuous Flight Augers	RC - Rock Core
AWG - Rock Core, 1-1/8"	CT - Continuous Tube	DC - Driving Casing	

# SCDOT Soil Test Log

<b>Project ID:</b>	CCR2	<b>County:</b>	Richland	<b>Boring No.:</b>	G-136
<b>Site Description:</b>	Carolina Crossroads Phase 2			<b>Route:</b>	N/A
<b>Eng./Geo.:</b>	M. Stanbury	<b>Boring Location:</b>	615+86	<b>Offset:</b>	107 LT
<b>Elev.:</b>	317.0 ft	<b>Latitude:</b>		<b>Date Started:</b>	2/14/2022
<b>Total Depth:</b>	83.6 ft	<b>Soil Depth:</b>	83.6 ft	<b>Date Completed:</b>	2/14/2022
<b>Bore Hole Diameter (in):</b>	2.25	<b>Sampler Configuration</b>		<b>Liner Required:</b>	Y (N)
<b>Drill Machine:</b>	D-50 #439	<b>Drill Method:</b>	RW	<b>Hammer Type:</b>	Automatic
<b>Core Size:</b>	N/A	<b>Driller:</b>	R. Cassell	<b>Energy Ratio:</b>	90.8%
		<b>Groundwater:</b>	TOB	N/A	24HR

Elevation (ft)	Depth (ft)	MATERIAL DESCRIPTION	Graphic Log	Sample Depth (ft)	Sample No./Type	1st 6"	2nd 6"	3rd 6"	4th 6"	N Value	● SPT N VALUE ● PL X MC X LL X ▲ FINES CONTENT (%) + RQD (%) ■ REC (%)
	0.0										0 10 20 30 40 50 60 70 80 90
	2.0	<b>Coastal Plain</b> Brown, Moist, Very Stiff, Sandy Clay with High Gravel		0.0	SS-70	12	11	9	17	20	
				2.0							
		Brown and Orange, Medium Dense, Clayey Sand with Trace Gravel		4.0	SS-71	9	10	14	15	24	
312.0				6.0	SS-72	8	9	13	14	22	
				8.0	SS-73	6	8	8	9	16	
307.0					SS-74	4	5	6	5	11	
				13.4							
302.0	16.0				SS-75	8	9	14		23	
		<b>Residual</b>									
		Brown, Red, Black, and White, Moist, Stiff, Saprolitic, Sandy Silt		18.4	SS-76	8	7	5		12	
297.0				23.4							
					SS-77	3	4	5		9	
292.0	26.0										
		Red, Brown, and Black, Moist, Firm to Very Stiff, Saprolitic, Clayey Silt		28.4	SS-78	3	4	4		8	
287.0				33.4							
					SS-79	5	5	7		12	
282.0				38.4							
					SS-80	4	6	8		14	
277.0				43.4							
					SS-81	7	11	17		28	

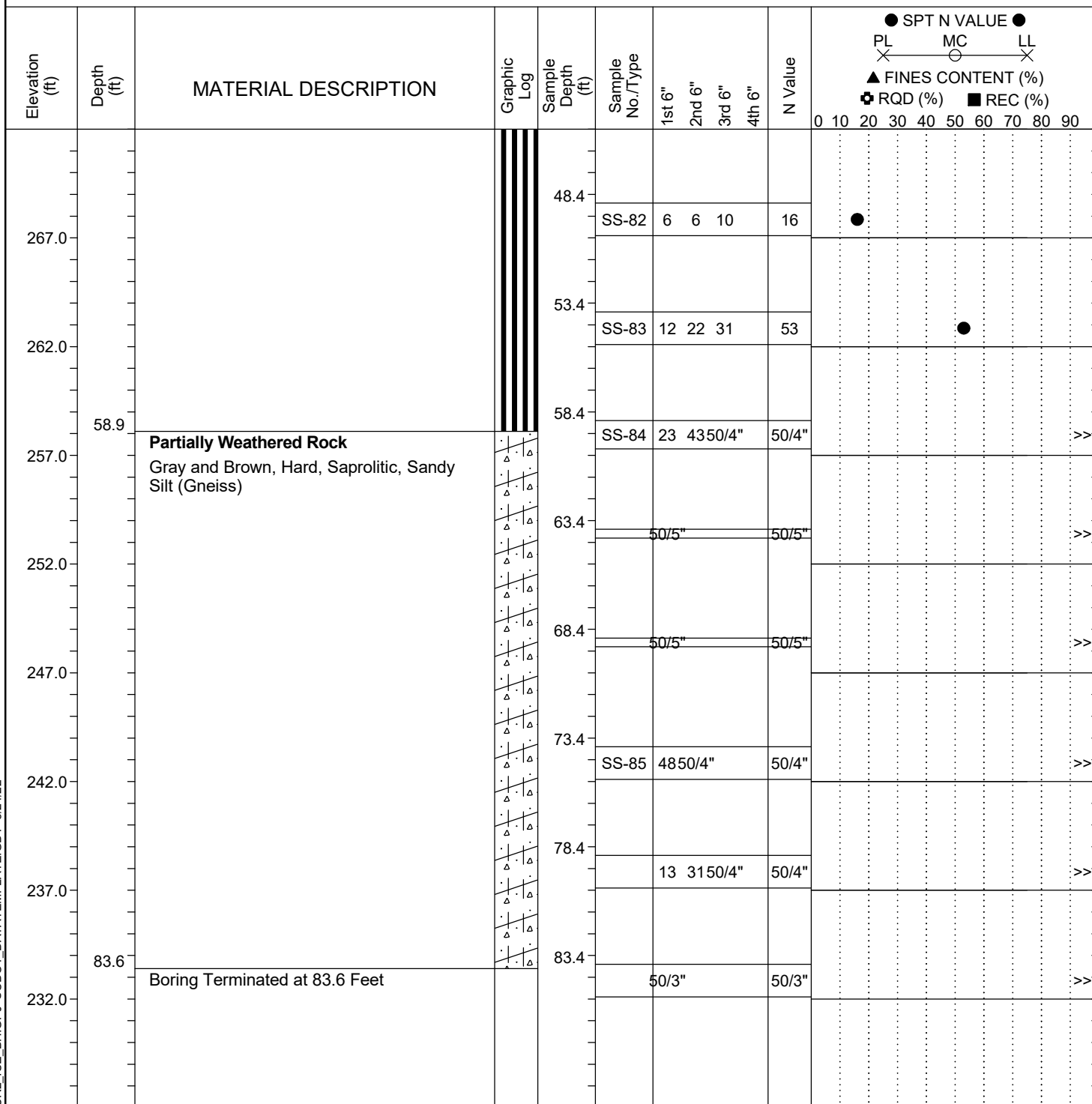
## LEGEND

Continued Next Page

SAMPLER TYPE		DRILLING METHOD	
SS - Split Spoon	NQ - Rock Core, 1-7/8"	HSA - Hollow Stem Auger	RW - Rotary Wash
UD - Undisturbed Sample	CU - Cuttings	CFA - Continuous Flight Augers	RC - Rock Core
AWG - Rock Core, 1-1/8"	CT - Continuous Tube	DC - Driving Casing	

# SCDOT Soil Test Log

<b>Project ID:</b>	CCR2	<b>County:</b>	Richland	<b>Boring No.:</b>	G-136
<b>Site Description:</b>	Carolina Crossroads Phase 2			<b>Route:</b>	N/A
<b>Eng./Geo.:</b>	M. Stanbury	<b>Boring Location:</b>	615+86	<b>Offset:</b>	107 LT
<b>Elev.:</b>	317.0 ft	<b>Latitude:</b>		<b>Alignment:</b>	US176WB
<b>Total Depth:</b>	83.6 ft	<b>Soil Depth:</b>	83.6 ft	<b>Date Started:</b>	2/14/2022
<b>Core Depth:</b>	N/A ft	<b>Date Completed:</b>	2/14/2022		
<b>Bore Hole Diameter (in):</b>	2.25	<b>Sampler Configuration</b>		<b>Liner Required:</b>	Y (N)
<b>Drill Machine:</b>	D-50 #439	<b>Drill Method:</b>	RW	<b>Liner Used:</b>	Y (N)
<b>Hammer Type:</b>	Automatic	<b>Energy Ratio:</b>	90.8%		
<b>Core Size:</b>	N/A	<b>Driller:</b>	R. Cassell	<b>Groundwater:</b>	TOB N/A
				<b>24HR</b>	



## LEGEND

SAMPLER TYPE		DRILLING METHOD	
SS - Split Spoon	NQ - Rock Core, 1-7/8"	HSA - Hollow Stem Auger	RW - Rotary Wash
UD - Undisturbed Sample	CU - Cuttings	CFA - Continuous Flight Augers	RC - Rock Core
AWG - Rock Core, 1-1/8"	CT - Continuous Tube	DC - Driving Casing	

SC\_DOT 20-81\_CCR2\_CCR2 ICE\_BH.GPJ SCDOT\_DATATEMPLATE.GDT 3/24/22



# SCDOT Soil Test Log

<b>Project ID:</b>	CCR2	<b>County:</b>	Richland	<b>Boring No.:</b>	G-138
<b>Site Description:</b>	Carolina Crossroads Phase 2			<b>Route:</b>	N/A
<b>Eng./Geo.:</b>	M. Stanbury	<b>Boring Location:</b>	N/A	<b>Offset:</b>	N/A
<b>Elev.:</b>	ft	<b>Latitude:</b>		<b>Date Started:</b>	2/10/2022
<b>Total Depth:</b>	90.7 ft	<b>Soil Depth:</b>	90.7 ft	<b>Date Completed:</b>	2/10/2022
<b>Bore Hole Diameter (in):</b>	2.25	<b>Sampler Configuration</b>		<b>Liner Required:</b>	Y (N)
<b>Drill Machine:</b>	D-50 #439	<b>Drill Method:</b>	RW	<b>Hammer Type:</b>	Automatic
<b>Core Size:</b>	N/A	<b>Driller:</b>	R. Cassell	<b>Energy Ratio:</b>	90.8%
		<b>Groundwater:</b>	TOB	<b>24HR</b>	

Elevation (ft)	Depth (ft)	MATERIAL DESCRIPTION	Graphic Log	Sample Depth (ft)	Sample No./Type	1st 6"	2nd 6"	3rd 6"	4th 6"	N Value	● SPT N VALUE ● PL X MC X LL X ▲ FINES CONTENT (%) + RQD (%) ■ REC (%)
	0.0	<b>Coastal Plain</b> Red and Brown, Moist, Stiff, Sandy Clay with High Gravel		0.0	SS-54	4	5	9	10	14	●
	2.0			2.0		8	12	14	16	26	●
	4.0			4.0							
	6.0			6.0	SS-55	5	7	8	10	15	●
	8.0	Brown and Orange, Moist, Medium Dense, Clayey Sand with Trace Gravel		8.0	SS-56	4	6	8	8	14	●
	10.0			10.0	SS-57	5	6	7	7	13	●
	12.0			12.0							
	14.2			14.2							
	15.2	<b>Residual</b> Brown, Red, and White, Moist, Stiff, Saprolitic, Clayey Silt		15.2	SS-58	4	7	8		15	●
	17.0			17.0							
	19.2			19.2	SS-59	3	4	7		11	●
	21.0			21.0							
	24.2			24.2	SS-60	3	4	5		9	●
	26.0			26.0							
	29.2			29.2	SS-61	2	4	6		10	●
	31.0			31.0							
	34.0			34.0							
	36.0	Brown, Red, and Black, Moist, Stiff, Saprolitic, Sandy Silt		36.0	SS-62	4	4	6		10	●
	38.0			38.0							
	39.2	Brown, Red, and Black, Moist, Stiff, Saprolitic, Clayey Silt		39.2	SS-63	4	5	6		11	●
	41.0			41.0							
	44.0			44.0							
	44.2	Brown, Red, and Black, Moist, Very Stiff to		44.2							●

## LEGEND

Continued Next Page

### SAMPLER TYPE

### DRILLING METHOD

SS - Split Spoon  
UD - Undisturbed Sample  
AWG - Rock Core, 1-1/8"

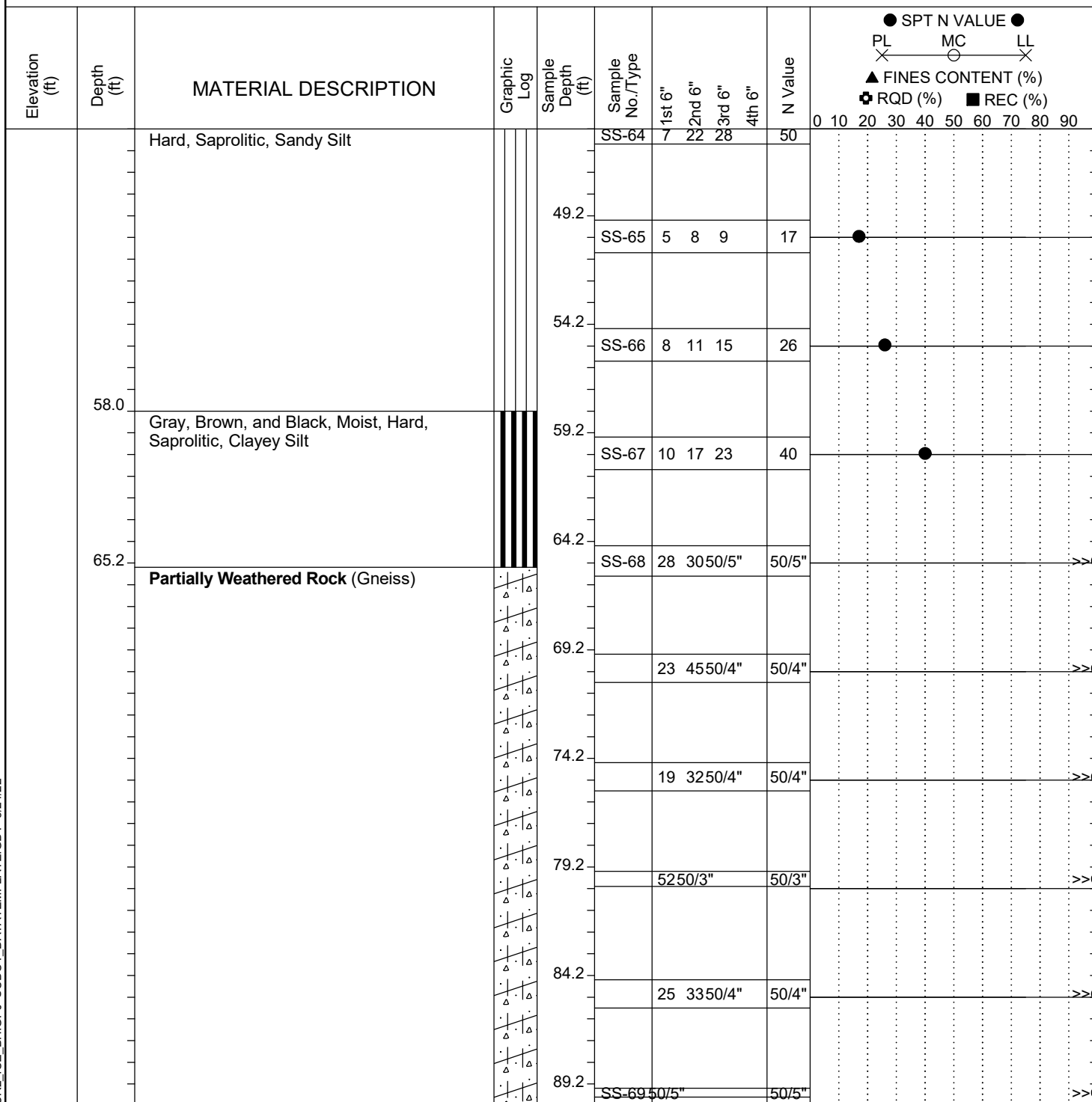
NQ - Rock Core, 1-7/8"  
CU - Cuttings  
CT - Continuous Tube

HSA - Hollow Stem Auger  
CFA - Continuous Flight Augers  
DC - Driving Casing

RW - Rotary Wash  
RC - Rock Core

# SCDOT Soil Test Log

<b>Project ID:</b>	CCR2	<b>County:</b>	Richland	<b>Boring No.:</b>	G-138
<b>Site Description:</b>	Carolina Crossroads Phase 2			<b>Route:</b>	N/A
<b>Eng./Geo.:</b>	M. Stanbury	<b>Boring Location:</b>	N/A	<b>Offset:</b>	N/A
<b>Elev.:</b>	ft	<b>Latitude:</b>		<b>Longitude:</b>	
<b>Total Depth:</b>	90.7 ft	<b>Soil Depth:</b>	90.7 ft	<b>Core Depth:</b>	N/A ft
<b>Date Started:</b>	2/10/2022			<b>Date Completed:</b>	2/10/2022
<b>Bore Hole Diameter (in):</b>	2.25	<b>Sampler Configuration</b>		<b>Liner Required:</b>	Y (N)
<b>Liner Used:</b>	Y (N)	<b>Drill Machine:</b>	D-50 #439	<b>Drill Method:</b>	RW
<b>Hammer Type:</b>	Automatic	<b>Energy Ratio:</b>	90.8%	<b>Core Size:</b>	N/A
<b>Driller:</b>	R. Cassell	<b>Groundwater:</b>	TOB	<b>24HR</b>	



## LEGEND

Continued Next Page

SAMPLER TYPE		DRILLING METHOD	
SS - Split Spoon	NQ - Rock Core, 1-7/8"	HSA - Hollow Stem Auger	RW - Rotary Wash
UD - Undisturbed Sample	CU - Cuttings	CFA - Continuous Flight Augers	RC - Rock Core
AWG - Rock Core, 1-1/8"	CT - Continuous Tube	DC - Driving Casing	

<b>Project ID:</b>	CCR2				<b>County:</b>	Richland		<b>Boring No.:</b>	G-138		
<b>Site Description:</b>	Carolina Crossroads Phase 2							<b>Route:</b>	N/A		
<b>Eng./Geo.:</b>	M. Stanbury		<b>Boring Location:</b>	N/A		<b>Offset:</b>	N/A		<b>Alignment:</b>	N/A	
<b>Elev.:</b>	ft		<b>Latitude:</b>			<b>Longitude:</b>			<b>Date Started:</b>	2/10/2022	
<b>Total Depth:</b>	90.7 ft		<b>Soil Depth:</b>	90.7 ft		<b>Core Depth:</b>	N/A ft		<b>Date Completed:</b>	2/10/2022	
<b>Bore Hole Diameter (in):</b>	2.25		<b>Sampler Configuration</b>			<b>Liner Required:</b>	Y <sup>Ⓝ</sup>		<b>Liner Used:</b>	Y <sup>Ⓝ</sup>	
<b>Drill Machine:</b>	D-50 #439		<b>Drill Method:</b>	RW		<b>Hammer Type:</b>	Automatic		<b>Energy Ratio:</b>	90.8%	
<b>Core Size:</b>	N/A		<b>Driller:</b>	R. Cassell		<b>Groundwater:</b>	TOB N/A		<b>24HR</b>		

[illegible]

### LEGEND

SAMPLER TYPE		DRILLING METHOD	
SS - Split Spoon	NQ - Rock Core, 1-7/8"	HSA - Hollow Stem Auger	RW - Rotary Wash
UD - Undisturbed Sample	CU - Cuttings	CFA - Continuous Flight Augers	RC - Rock Core
AWG - Rock Core, 1-1/8"	CT - Continuous Tube	DC - Driving Casing	

# SCDOT Soil Test Log

<b>Project ID:</b>	CCR2	<b>County:</b>	Richland	<b>Boring No.:</b>	G-139
<b>Site Description:</b>	Carolina Crossroads Phase 2			<b>Route:</b>	N/A
<b>Eng./Geo.:</b>	M. Stanbury	<b>Boring Location:</b>	205+07	<b>Offset:</b>	106 RT
<b>Elev.:</b>	ft	<b>Latitude:</b>		<b>Alignment:</b>	I20CL
<b>Total Depth:</b>	69.4 ft	<b>Soil Depth:</b>	69.4 ft	<b>Date Started:</b>	2/15/2022
<b>Core Depth:</b>	N/A ft	<b>Date Completed:</b>	2/15/2022		
<b>Bore Hole Diameter (in):</b>	2.25	<b>Sampler Configuration</b>		<b>Liner Required:</b>	Y (N)
<b>Liner Used:</b>	Y (N)				
<b>Drill Machine:</b>	D-50 #439	<b>Drill Method:</b>	RW	<b>Hammer Type:</b>	Automatic
<b>Energy Ratio:</b>	90.8%				
<b>Core Size:</b>	N/A	<b>Driller:</b>	R. Cassell	<b>Groundwater:</b>	TOB N/A
<b>24HR</b>					

Elevation (ft)	Depth (ft)	MATERIAL DESCRIPTION	Graphic Log	Sample Depth (ft)	Sample No./Type	1st 6"	2nd 6"	3rd 6"	4th 6"	N Value	● SPT N VALUE ● PL X MC X LL X ▲ FINES CONTENT (%) + RQD (%) ■ REC (%)
	0.0	<b>Coastal Plain</b>		0.0	SS-86	7	10	12	15	22	
		Red and Brown, Moist, Medium Dense to Dense, Clayey Sand with Some Gravel		2.0							
				4.0	SS-87	8	13	14	20	27	
				6.0	SS-88	12	14	28	27	42	
	6.5	Red, Gray, and Brown, Moist, Very Stiff, Sandy Clay		8.0	SS-89	6	9	12	16	21	
	8.0	Red, Brown, and Black, Moist, Medium Dense, Clayey Sand			SS-90	4	5	8	7	13	
				13.0							
					SS-91	4	5	5		10	
				18.0							
	18.5	<b>Residual</b> Brown and Black, Moist, Medium Dense, Saprolitic, Silty Sand			SS-92	7	10	6		16	
	20.0	Red, Gray, Brown, Black, and White, Moist, Firm to Hard, Saprolitic, Clayey Silt		23.0							
					SS-93	3	2	3		5	
				28.0							
					SS-94	3	4	5		9	
				33.0							
					SS-95	3	3	4		7	
				38.0							
					SS-96	3	3	5		8	
				43.0							
						5	10	14		24	

## LEGEND

Continued Next Page

### SAMPLER TYPE

### DRILLING METHOD

SS - Split Spoon  
UD - Undisturbed Sample  
AWG - Rock Core, 1-1/8"

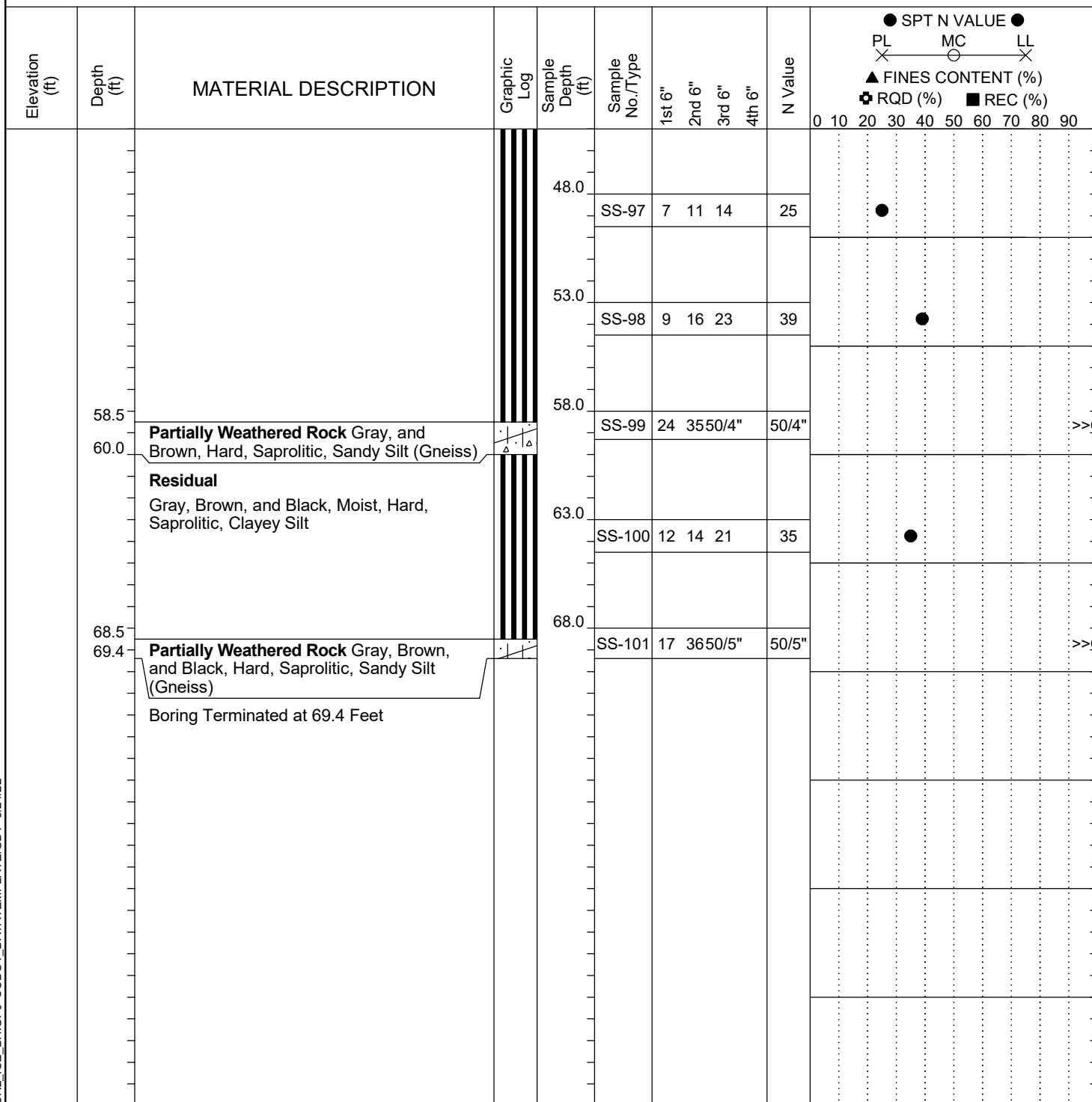
NQ - Rock Core, 1-7/8"  
CU - Cuttings  
CT - Continuous Tube

HSA - Hollow Stem Auger  
CFA - Continuous Flight Augers  
DC - Driving Casing

RW - Rotary Wash  
RC - Rock Core

# SCDOT Soil Test Log

Project ID:	CCR2				County:	Richland		Boring No.:	G-139	
Site Description:	Carolina Crossroads Phase 2							Route:	N/A	
Eng./Geo.:	M. Stanbury		Boring Location:	205+07		Offset:	106 RT	Alignment:	I20CL	
Elev.:	ft		Latitude:			Longitude:			Date Started:	2/15/2022
Total Depth:	69.4 ft		Soil Depth:	69.4 ft		Core Depth:	N/A ft		Date Completed:	2/15/2022
Bore Hole Diameter (in):	2.25		Sampler Configuration			Liner Required:	Y (N)		Liner Used:	Y (N)
Drill Machine:	D-50 #439		Drill Method:	RW		Hammer Type:	Automatic		Energy Ratio:	90.8%
Core Size:	N/A		Driller:	R. Cassell		Groundwater:	TOB	N/A		24HR



## LEGEND

SAMPLER TYPE		DRILLING METHOD	
SS - Split Spoon	NQ - Rock Core, 1-7/8"	HSA - Hollow Stem Auger	RW - Rotary Wash
UD - Undisturbed Sample	CU - Cuttings	CFA - Continuous Flight Augers	RC - Rock Core
AWG - Rock Core, 1-1/8"	CT - Continuous Tube	DC - Driving Casing	

# SCDOT Soil Test Log

<b>Project ID:</b>	CCR2	<b>County:</b>	Richland	<b>Boring No.:</b>	G-140
<b>Site Description:</b>	Carolina Crossroads Phase 2			<b>Route:</b>	N/A
<b>Eng./Geo.:</b>	M. Stanbury	<b>Boring Location:</b>	205+98	<b>Offset:</b>	81 RT
<b>Alignment:</b>	I20CL				
<b>Elev.:</b>	ft	<b>Latitude:</b>		<b>Longitude:</b>	
<b>Date Started:</b>	2/16/2022				
<b>Total Depth:</b>	63.4 ft	<b>Soil Depth:</b>	63.4 ft	<b>Core Depth:</b>	N/A ft
<b>Date Completed:</b>	2/16/2022				
<b>Bore Hole Diameter (in):</b>	2.25	<b>Sampler Configuration</b>		<b>Liner Required:</b>	Y (N)
<b>Liner Used:</b>	Y (N)				
<b>Drill Machine:</b>	D-50 #439	<b>Drill Method:</b>	RW	<b>Hammer Type:</b>	Automatic
<b>Energy Ratio:</b>	90.8%				
<b>Core Size:</b>	N/A	<b>Driller:</b>	R. Cassell	<b>Groundwater:</b>	TOB N/A
<b>24HR</b>					

Elevation (ft)	Depth (ft)	MATERIAL DESCRIPTION	Graphic Log	Sample Depth (ft)	Sample No./Type	1st 6"	2nd 6"	3rd 6"	4th 6"	N Value	<div> <div> ● SPT N VALUE ● </div> <div> PL X MC X LL X </div> <div> ▲ FINES CONTENT (%) </div> <div> ⊕ RQD (%) ■ REC (%) </div> </div>
	0.0	<b>Coastal Plain</b> Brown and Orange, Moist, Loose to Medium Dense, Clayey Sand		0.0	SS-102	5	6	6	7	12	●
	2.0			2.0	SS-103	5	7	5	4	12	●
	4.0			4.0	SS-104	4	5	6	5	11	●
	6.0			6.0	SS-105	4	5	5	6	10	●
	8.0			8.0	SS-106	3	4	5	5	9	●
	13.1			13.1	SS-107	3	3	4		7	●
	18.1			18.1	SS-108	3	3	4		7	●
	23.1			23.1	SS-109	3	2	4		6	●
	28.1			28.1	SS-110	4	4	5		9	●
	32.0	<b>Residual</b> Gray, Orange, Brown, and Black, Moist, Stiff to Very Stiff, Saprolitic, Clayey Silt		33.1	SS-111	4	5	6		11	●
	38.1			38.1	SS-112	4	5	6		11	●
	43.1			43.1	SS-113	5	9	12		21	●

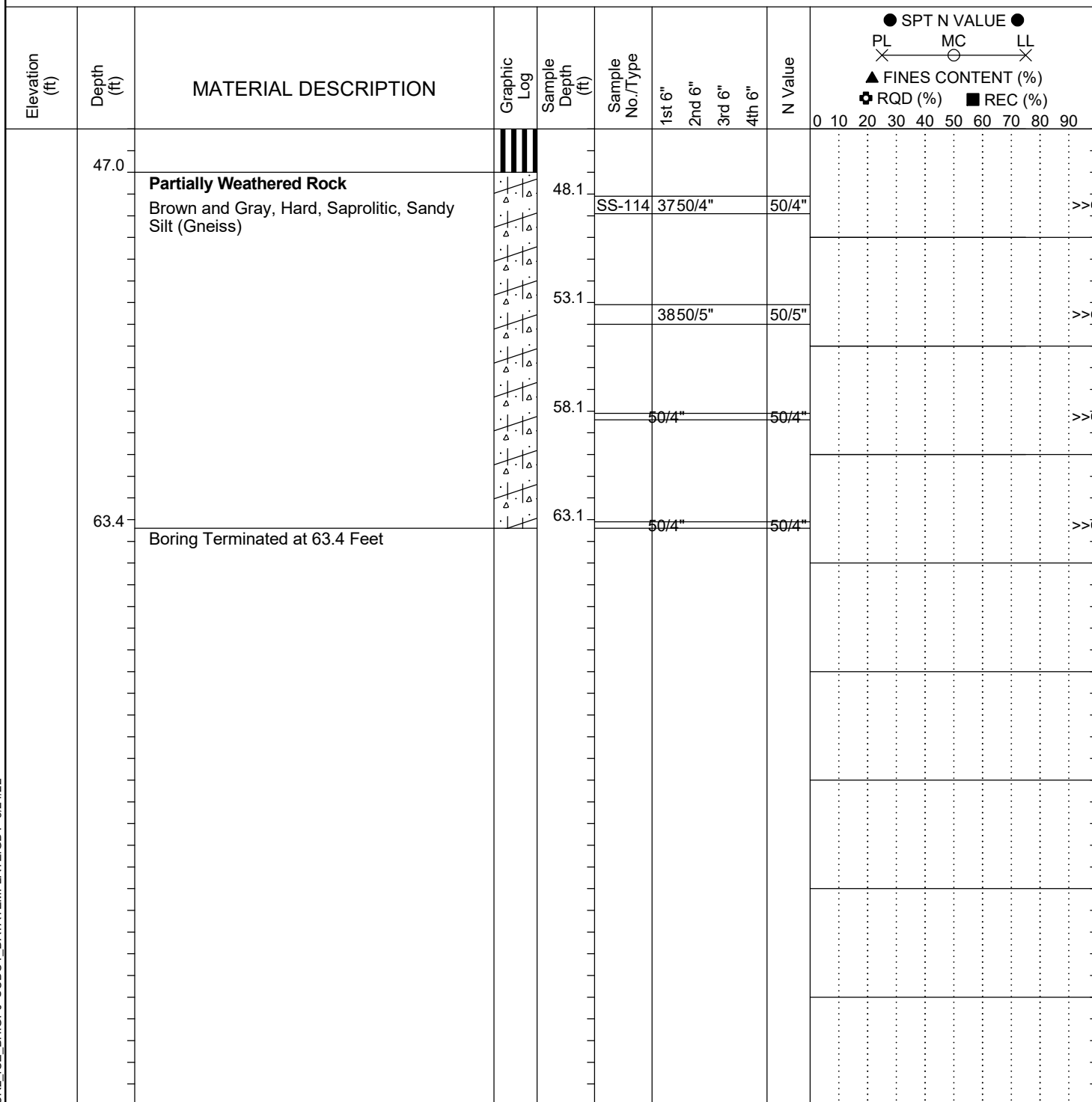
## LEGEND

Continued Next Page

SAMPLER TYPE		DRILLING METHOD	
SS - Split Spoon	NQ - Rock Core, 1-7/8"	HSA - Hollow Stem Auger	RW - Rotary Wash
UD - Undisturbed Sample	CU - Cuttings	CFA - Continuous Flight Augers	RC - Rock Core
AWG - Rock Core, 1-1/8"	CT - Continuous Tube	DC - Driving Casing	

# SCDOT Soil Test Log

<b>Project ID:</b> CCR2		<b>County:</b> Richland		<b>Boring No.:</b> G-140	
<b>Site Description:</b> Carolina Crossroads Phase 2				<b>Route:</b> N/A	
<b>Eng./Geo.:</b> M. Stanbury		<b>Boring Location:</b> 205+98		<b>Offset:</b> 81 RT	
<b>Elev.:</b> ft		<b>Latitude:</b>		<b>Alignment:</b> I20CL	
<b>Total Depth:</b> 63.4 ft		<b>Soil Depth:</b> 63.4 ft		<b>Date Started:</b> 2/16/2022	
<b>Core Depth:</b> N/A ft		<b>Date Completed:</b> 2/16/2022			
<b>Bore Hole Diameter (in):</b> 2.25		<b>Sampler Configuration</b>		<b>Liner Required:</b> Y (N)	
<b>Drill Machine:</b> D-50 #439		<b>Drill Method:</b> RW		<b>Energy Ratio:</b> 90.8%	
<b>Core Size:</b> N/A		<b>Driller:</b> R. Cassell		<b>Groundwater:</b> TOB N/A	

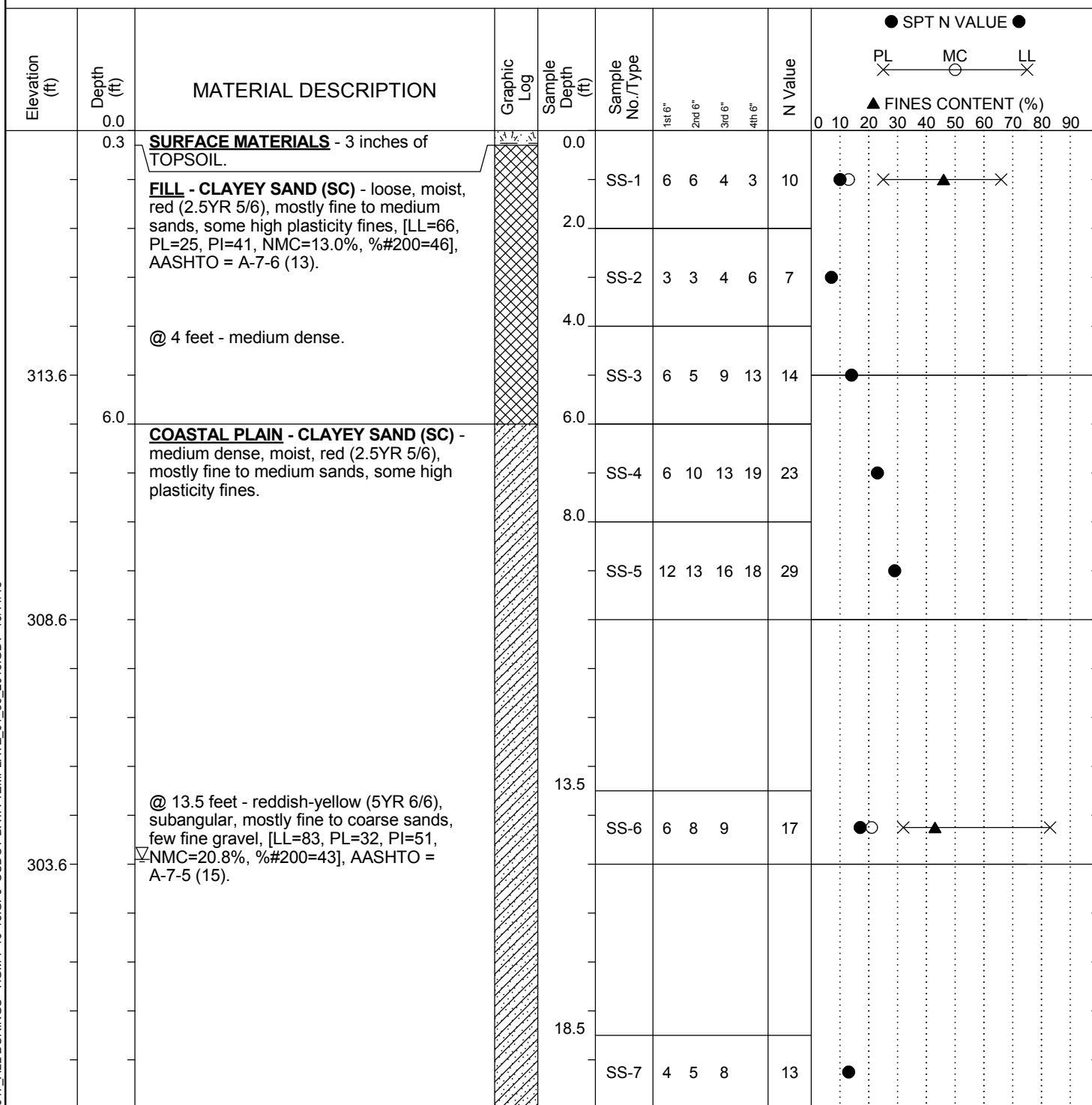


## LEGEND

SAMPLER TYPE		DRILLING METHOD	
SS - Split Spoon	NQ - Rock Core, 1-7/8"	HSA - Hollow Stem Auger	RW - Rotary Wash
UD - Undisturbed Sample	CU - Cuttings	CFA - Continuous Flight Augers	RC - Rock Core
AWG - Rock Core, 1-1/8"	CT - Continuous Tube	DC - Driving Casing	

# SCDOT Soil Test Log

Project ID:	P027662				County:	Lexington/Richland		Boring No.:	B-58		
Site Description:	Carolina Crossroads I-20/26/126 Corridor Improvement Project							Route:	Site 39		
Eng./Geo.:	AKS		Boring Location:	204+85.63		Offset:	L:130.273'		Alignment:	Proposed	
Elev.:	318.6 ft		Latitude:	34.039822		Longitude:	-81.093664		Date Started:	4/4/2018	
Total Depth:	102.4 ft		Soil Depth:	102.4 ft		Core Depth:	0 ft		Date Completed:	4/6/2018	
Bore Hole Diameter (in):	3.5		Sampler Configuration			Liner Required:	Y (N)		Liner Used:	Y (N)	
Drill Machine:	D-50		Drill Method:	RW		Hammer Type:	Automatic		Energy Ratio:	86.5%	
Core Size:	N/A		Driller:	J. Millwood		Groundwater:	TOB	14.9 ft		24HR	32.5 ft



## LEGEND

Continued Next Page

SAMPLER TYPE		DRILLING METHOD	
SS - Split Spoon	NQ - Rock Core, 1-7/8"	HSA - Hollow Stem Auger	RW - Rotary Wash
UD - Undisturbed Sample	CU - Cuttings	CFA - Continuous Flight Augers	RC - Rock Core
AWG - Rock Core, 1-1/8"	CT - Continuous Tube	DC - Driving Casing	



# SCDOT Soil Test Log

Project ID:		P027662			County:	Lexington/Richland		Boring No.:	B-58		
Site Description:		Carolina Crossroads I-20/26/126 Corridor Improvement Project						Route:	Site 39		
Eng./Geo.:		AKS	Boring Location:		204+85.63		Offset:	L:130.273'	Alignment:	Proposed	
Elev.:	318.6 ft	Latitude:	34.039822	Longitude:	-81.093664		Date Started:		4/4/2018		
Total Depth:		102.4 ft	Soil Depth:	102.4 ft	Core Depth:	0 ft		Date Completed:		4/6/2018	
Bore Hole Diameter (in):		3.5	Sampler Configuration		Liner Required:		Y	(N)	Liner Used:	Y	(N)
Drill Machine:		D-50	Drill Method:	RW		Hammer Type:	Automatic		Energy Ratio:	86.5%	
Core Size:		N/A	Driller:	J. Millwood		Groundwater:	TOB	14.9 ft		24HR	32.5 ft

Elevation (ft)	Depth (ft)	MATERIAL DESCRIPTION	Graphic Log	Sample Depth (ft)	Sample No./Type	1st 6"	2nd 6"	3rd 6"	4th 6"	N Value	<div> <div>● SPT N VALUE ●</div> <div> <div>PL</div> <div>MC</div> <div>LL</div> </div> <div>▲ FINES CONTENT (%)</div> </div>
293.6		@ 23.5 feet - loose, reddish-yellow (5YR 7/8), mostly fine to medium sands, little low plasticity fines, [LL=45, PL=23, PI=22, NMC=18.1%, %200=26], AASHTO = A-2-7 (0).		23.5	SS-8	3	3	4		7	● ○▲ — ×
288.6		@ 28.5 feet - yellow (10YR 8/8).		28.5	SS-9	3	3	3		6	●
283.6	33.5	<b>SILTY SAND (SM)</b> - very loose, moist, yellow (10YR 8/8), mostly fine to medium sands, little low plasticity fines, [LL=45, PL=27, PI=18, NMC=22.1%, %200=26], AASHTO = A-2-7 (0).		33.5	SS-10	2	1	2		3	● ○▲ — ×
		@ 38.5 feet - loose.		38.5	SS-11	2	3	3		6	●

## LEGEND

Continued Next Page

SAMPLER TYPE		DRILLING METHOD	
SS - Split Spoon	NQ - Rock Core, 1-7/8"	HSA - Hollow Stem Auger	RW - Rotary Wash
UD - Undisturbed Sample	CU - Cuttings	CFA - Continuous Flight Augers	RC - Rock Core
AWG - Rock Core, 1-1/8"	CT - Continuous Tube	DC - Driving Casing	

# SCDOT Soil Test Log

Project ID:		P027662			County:	Lexington/Richland		Boring No.:	B-58		
Site Description:		Carolina Crossroads I-20/26/126 Corridor Improvement Project						Route:	Site 39		
Eng./Geo.:		AKS	Boring Location:		204+85.63		Offset:	L:130.273'	Alignment:	Proposed	
Elev.:	318.6 ft	Latitude:	34.039822	Longitude:	-81.093664		Date Started:		4/4/2018		
Total Depth:		102.4 ft	Soil Depth:	102.4 ft	Core Depth:	0 ft		Date Completed:		4/6/2018	
Bore Hole Diameter (in):		3.5	Sampler Configuration		Liner Required:		Y	(N)	Liner Used:	Y	(N)
Drill Machine:		D-50	Drill Method:	RW		Hammer Type:	Automatic		Energy Ratio:	86.5%	
Core Size:	N/A		Driller:	J. Millwood		Groundwater:	TOB	14.9 ft		24HR	32.5 ft

Elevation (ft)	Depth (ft)	MATERIAL DESCRIPTION	Graphic Log	Sample Depth (ft)	Sample No./Type	1st 6"	2nd 6"	3rd 6"	4th 6"	N Value	<div> ● SPT N VALUE ● </div> <div> PL X MC O LL X </div> <div> ▲ FINES CONTENT (%) </div>
273.6		@ 43.5 feet - medium dense.		43.5	SS-12	5	7	7		14	●
268.6	48.5	<b>PIEDMONT RESIDUUM - SILT WITH SAND (ML)</b> - hard, moist, gray (10YR 6/1), yellow (10YR 8/8), and brown (10YR 4/3), mostly low plasticity fines, little fine sands, [LL=48, PL=30, PI=18, NMC=28.0%, %200=78], AASHTO = A-7-5 (15).		48.5	SS-13	10	14	20		34	○●—X ▲
263.6		@ 53.5 feet - yellow (10YR 7/6).		53.5	SS-14	14	21	28		49	●
				58.5	SS-15	15	17	33		50	●

## LEGEND

Continued Next Page

SAMPLER TYPE		DRILLING METHOD	
SS	- Split Spoon	HSA	- Hollow Stem Auger
UD	- Undisturbed Sample	CFA	- Continuous Flight Augers
AWG	- Rock Core, 1-1/8"	DC	- Driving Casing
NQ	- Rock Core, 1-7/8"	RW	- Rotary Wash
CU	- Cuttings	RC	- Rock Core
CT	- Continuous Tube		

# SCDOT Soil Test Log

Project ID:	P027662				County:	Lexington/Richland		Boring No.:	B-58		
Site Description:	Carolina Crossroads I-20/26/126 Corridor Improvement Project							Route:	Site 39		
Eng./Geo.:	AKS		Boring Location:	204+85.63		Offset:	L:130.273'		Alignment:	Proposed	
Elev.:	318.6 ft		Latitude:	34.039822		Longitude:	-81.093664		Date Started:	4/4/2018	
Total Depth:	102.4 ft		Soil Depth:	102.4 ft		Core Depth:	0 ft		Date Completed:	4/6/2018	
Bore Hole Diameter (in):	3.5		Sampler Configuration			Liner Required:	Y (N)		Liner Used:	Y (N)	
Drill Machine:	D-50		Drill Method:	RW		Hammer Type:	Automatic		Energy Ratio:	86.5%	
Core Size:	N/A		Driller:	J. Millwood		Groundwater:	TOB	14.9 ft		24HR	32.5 ft

Elevation (ft)	Depth (ft)	MATERIAL DESCRIPTION	Graphic Log	Sample Depth (ft)	Sample No./Type	1st 6"	2nd 6"	3rd 6"	4th 6"	N Value	<div> <div>● SPT N VALUE ●</div> <div> <div>PL X</div> <div>MC ○</div> <div>LL X</div> </div> <div>▲ FINES CONTENT (%)</div> <div>0 10 20 30 40 50 60 70 80 90</div> </div>
253.6	63.5	<b>PARTIALLY WEATHERED ROCK (PWR)</b> <b>- SILTY SAND (SM)</b> - very dense, moist, grayish-brown (10YR 4/2).  @ 68.5 feet - light gray (10YR 7/1).		63.5	SS-16	50/5"-	-			100	
248.6				68.5	SS-17	27	40	50/5"		100	
243.6				73.5	SS-18	50/3"-	-			100	
				78.5	SS-19	50/2"-	-			100	

## LEGEND

Continued Next Page

SAMPLER TYPE		DRILLING METHOD	
SS - Split Spoon	NQ - Rock Core, 1-7/8"	HSA - Hollow Stem Auger	RW - Rotary Wash
UD - Undisturbed Sample	CU - Cuttings	CFA - Continuous Flight Augers	RC - Rock Core
AWG - Rock Core, 1-1/8"	CT - Continuous Tube	DC - Driving Casing	

# SCDOT Soil Test Log

Project ID:	P027662				County:	Lexington/Richland		Boring No.:	B-58		
Site Description:	Carolina Crossroads I-20/26/126 Corridor Improvement Project							Route:	Site 39		
Eng./Geo.:	AKS		Boring Location:	204+85.63		Offset:	L:130.273'		Alignment:	Proposed	
Elev.:	318.6 ft		Latitude:	34.039822		Longitude:	-81.093664		Date Started:	4/4/2018	
Total Depth:	102.4 ft		Soil Depth:	102.4 ft		Core Depth:	0 ft		Date Completed:	4/6/2018	
Bore Hole Diameter (in):	3.5		Sampler Configuration			Liner Required:	Y (N)		Liner Used:	Y (N)	
Drill Machine:	D-50		Drill Method:	RW		Hammer Type:	Automatic		Energy Ratio:	86.5%	
Core Size:	N/A		Driller:	J. Millwood		Groundwater:	TOB	14.9 ft		24HR	32.5 ft

Elevation (ft)	Depth (ft)	MATERIAL DESCRIPTION	Graphic Log	Sample Depth (ft)	Sample No./Type	1st 6"	2nd 6"	3rd 6"	4th 6"	N Value	<div> <div>● SPT N VALUE ●</div> <div> <div>PL X</div> <div>MC ○</div> <div>LL X</div> </div> <div>▲ FINES CONTENT (%)</div> <div>0 10 20 30 40 50 60 70 80 90</div> </div>
233.6		@ 83.5 feet - pale brown (10YR 6/3).		83.5	SS-19	42	50/3"	-		100	
228.6				88.5	SS-20	50/1"	-			100	
223.6				93.5	SS-21	50/2"	-			100	
				98.5	SS-22	50/3"	-			100	


## LEGEND

Continued Next Page

SAMPLER TYPE		DRILLING METHOD	
SS	- Split Spoon	HSA	- Hollow Stem Auger
UD	- Undisturbed Sample	CFA	- Continuous Flight Augers
AWG	- Rock Core, 1-1/8"	DC	- Driving Casing
NQ	- Rock Core, 1-7/8"	RW	- Rotary Wash
CU	- Cuttings	RC	- Rock Core
CT	- Continuous Tube		

# SCDOT Soil Test Log

Project ID:		P027662			County:	Lexington/Richland		Boring No.:	B-58		
Site Description:		Carolina Crossroads I-20/26/126 Corridor Improvement Project						Route:	Site 39		
Eng./Geo.:		AKS	Boring Location:		204+85.63		Offset:	L:130.273'	Alignment:	Proposed	
Elev.:	318.6 ft	Latitude:	34.039822	Longitude:	-81.093664		Date Started:		4/4/2018		
Total Depth:		102.4 ft	Soil Depth:	102.4 ft	Core Depth:	0 ft		Date Completed:		4/6/2018	
Bore Hole Diameter (in):		3.5	Sampler Configuration		Liner Required:		Y	(N)	Liner Used:	Y	(N)
Drill Machine:		D-50	Drill Method:	RW		Hammer Type:	Automatic		Energy Ratio:	86.5%	
Core Size:	N/A		Driller:	J. Millwood		Groundwater:	TOB	14.9 ft		24HR	32.5 ft

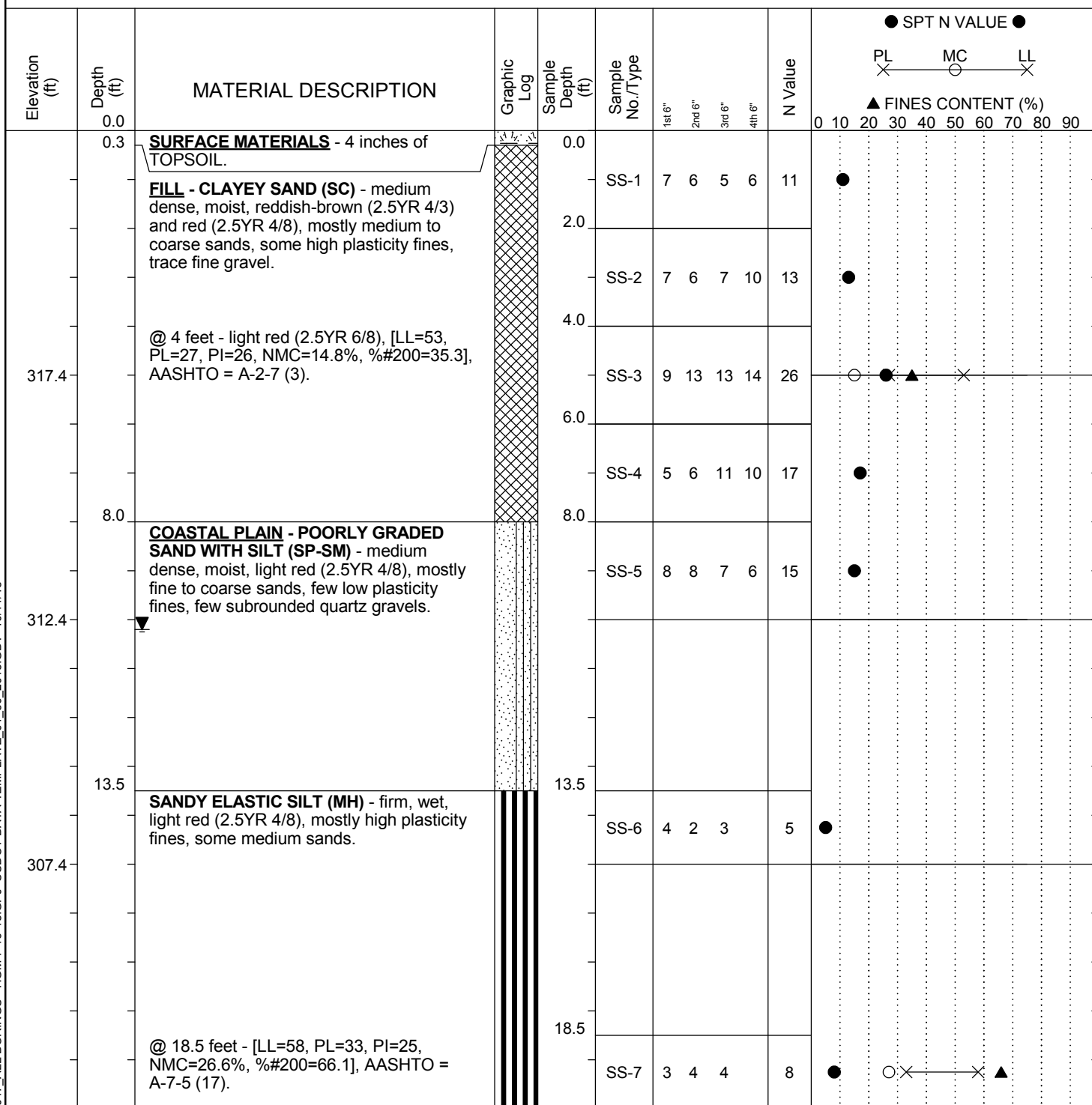
Elevation (ft)	Depth (ft)	MATERIAL DESCRIPTION	Graphic Log	Sample Depth (ft)	Sample No./Type	1st 6"	2nd 6"	3rd 6"	4th 6"	N Value	● SPT N VALUE ● PL — MC — LL ▲ FINES CONTENT (%) 0 10 20 30 40 50 60 70 80 90
	102.4	Boring Terminated at 102.4 feet.									
213.6											
208.6											
203.6											

## LEGEND

SAMPLER TYPE		DRILLING METHOD	
SS - Split Spoon	NQ - Rock Core, 1-7/8"	HSA - Hollow Stem Auger	RW - Rotary Wash
UD - Undisturbed Sample	CU - Cuttings	CFA - Continuous Flight Augers	RC - Rock Core
AWG - Rock Core, 1-1/8"	CT - Continuous Tube	DC - Driving Casing	

# SCDOT Soil Test Log

Project ID:		P027662			County:		Lexington/Richland		Boring No.:		B-59		
Site Description:		Carolina Crossroads I-20/26/126 Corridor Improvement Project								Route:		Site 37	
Eng./Geo.:		ELF/MFC		Boring Location:			206+15.30		Offset:		R:154.848		
Elev.:		322.4 ft		Latitude:		34.039279		Longitude:		-81.092863		Date Started:	
Total Depth:		119.6 ft		Soil Depth:		110 ft		Core Depth:		9.6 ft		Date Completed:	
Bore Hole Diameter (in):		3.5		Sampler Configuration			Liner Required:		Y (N)		Liner Used:		
Drill Machine:		CME 55		Drill Method:		RW		Hammer Type:		Automatic		Energy Ratio:	
Core Size:		NQ		Driller:		T. Miller		Groundwater:		TOB N/A		24HR	
												10.2 ft	



## LEGEND

Continued Next Page

SAMPLER TYPE		DRILLING METHOD	
SS	- Split Spoon	HSA	- Hollow Stem Auger
UD	- Undisturbed Sample	CFA	- Continuous Flight Augers
AWG	- Rock Core, 1-1/8"	DC	- Driving Casing
NQ	- Rock Core, 1-7/8"	RW	- Rotary Wash
CU	- Cuttings	RC	- Rock Core
CT	- Continuous Tube		

# SCDOT Soil Test Log

Project ID:		P027662			County:		Lexington/Richland		Boring No.:		B-59		
Site Description:		Carolina Crossroads I-20/26/126 Corridor Improvement Project								Route:		Site 37	
Eng./Geo.:		ELF/MFC		Boring Location:			206+15.30		Offset:		R:154.848		
Elev.:		322.4 ft		Latitude:		34.039279		Longitude:		-81.092863		Date Started:	
Total Depth:		119.6 ft		Soil Depth:		110 ft		Core Depth:		9.6 ft		Date Completed:	
Bore Hole Diameter (in):		3.5		Sampler Configuration			Liner Required:		Y (N)		Liner Used:		
Drill Machine:		CME 55		Drill Method:		RW		Hammer Type:		Automatic		Energy Ratio:	
Core Size:		NQ		Driller:		T. Miller		Groundwater:		TOB N/A		24HR	
												10.2 ft	

Elevation (ft)	Depth (ft)	MATERIAL DESCRIPTION	Graphic Log	Sample Depth (ft)	Sample No./Type	1st 6"	2nd 6"	3rd 6"	4th 6"	N Value	<div> <div>● SPT N VALUE ●</div> <div> <div>PL</div> <div>MC</div> <div>LL</div> </div> <div>▲ FINES CONTENT (%)</div> </div>
297.4	23.5	<b>PIEDMONT RESIDUUM - SANDY SILT (ML)</b> - firm, moist, light red to light reddish-brown (2.5YR 4/8 to 7/4), mostly low plasticity fines, some fine to medium sands.		23.5	SS-8	3	3	5		8	●
292.4	28.5	@ 28.5 feet - red (2.5YR 4/6).		28.5	SS-9	2	3	3		6	●
287.4	33.5	<b>SILT (ML)</b> - firm, moist, red (2.5YR 4/6), mostly low plasticity fines, few fine sands, [LL=47, PL=34, PI=13, NMC=45.4%, %200=92.9], AASHTO = A-7-5 (16).		33.5	SS-10	3	2	4		6	●
	38.5			38.5	SS-11	2	3	4		7	●

## LEGEND

Continued Next Page

SAMPLER TYPE		DRILLING METHOD	
SS	- Split Spoon	HSA	- Hollow Stem Auger
UD	- Undisturbed Sample	CFA	- Continuous Flight Augers
AWG	- Rock Core, 1-1/8"	DC	- Driving Casing
NQ	- Rock Core, 1-7/8"	RW	- Rotary Wash
CU	- Cuttings	RC	- Rock Core
CT	- Continuous Tube		

# SCDOT Soil Test Log

<b>Project ID:</b>	P027662	<b>County:</b>	Lexington/Richland	<b>Boring No.:</b>	B-59
<b>Site Description:</b>	Carolina Crossroads I-20/26/126 Corridor Improvement Project			<b>Route:</b>	Site 37
<b>Eng./Geo.:</b>	ELF/MFC	<b>Boring Location:</b>	206+15.30	<b>Offset:</b>	R:154.848
<b>Elev.:</b>	322.4 ft	<b>Latitude:</b>	34.039279	<b>Longitude:</b>	-81.092863
<b>Date Started:</b>	1/15/2018				
<b>Total Depth:</b>	119.6 ft	<b>Soil Depth:</b>	110 ft	<b>Core Depth:</b>	9.6 ft
<b>Date Completed:</b>	1/19/2018				
<b>Bore Hole Diameter (in):</b>	3.5	<b>Sampler Configuration</b>	<b>Liner Required:</b> Y (N)		<b>Liner Used:</b> Y (N)
<b>Drill Machine:</b>	CME 55	<b>Drill Method:</b>	RW	<b>Hammer Type:</b>	Automatic
<b>Energy Ratio:</b>	84.1%				
<b>Core Size:</b>	NQ	<b>Driller:</b>	T. Miller	<b>Groundwater:</b>	TOB N/A
<b>24HR</b>	10.2 ft				

Elevation (ft)	Depth (ft)	MATERIAL DESCRIPTION	Graphic Log	Sample Depth (ft)	Sample No./Type	1st 6"	2nd 6"	3rd 6"	4th 6"	N Value	<div> <div>● SPT N VALUE ●</div> <div> <div>PL</div> <div>MC</div> <div>LL</div> </div> <div>▲ FINES CONTENT (%)</div> </div>
277.4	43.5	@ 43.5 feet - no recovery.		43.5	SS-12	2	3	4		7	●
272.4	48.5	@ 48.5 feet - no recovery, stiff.		48.5	SS-13	3	4	7		11	●
267.4	53.5	LEAN CLAY (CL) - very stiff, moist, reddish-yellow (7.5YR 8/6), mostly low plasticity fines, few fine sands, [LL=31, PL=23, PI=8, NMC=27.2%, %200=90.3], AASHTO = A-4 (7).		53.5	SS-14	12	12	17		29	●
58.5	58.5	SANDY SILT (ML) - hard, moist, light gray (7.5YR 7/1), mostly low plasticity fines, some fine to medium sands.		58.5	SS-15	10	16	23		39	●

## LEGEND

Continued Next Page

SAMPLER TYPE		DRILLING METHOD	
SS - Split Spoon	NQ - Rock Core, 1-7/8"	HSA - Hollow Stem Auger	RW - Rotary Wash
UD - Undisturbed Sample	CU - Cuttings	CFA - Continuous Flight Augers	RC - Rock Core
AWG - Rock Core, 1-1/8"	CT - Continuous Tube	DC - Driving Casing	



# SCDOT Soil Test Log

Project ID:		P027662			County:		Lexington/Richland		Boring No.:		B-59		
Site Description:			Carolina Crossroads I-20/26/126 Corridor Improvement Project							Route:		Site 37	
Eng./Geo.:		ELF/MFC		Boring Location:			206+15.30		Offset:		R:154.848		
Elev.:		322.4 ft		Latitude:		34.039279		Longitude:		-81.092863		Date Started:	
Total Depth:		119.6 ft		Soil Depth:		110 ft		Core Depth:		9.6 ft		Date Completed:	
Bore Hole Diameter (in):		3.5		Sampler Configuration			Liner Required:		Y (N)		Liner Used:		
Drill Machine:		CME 55		Drill Method:		RW		Hammer Type:		Automatic		Energy Ratio:	
Core Size:		NQ		Driller:		T. Miller		Groundwater:		TOB N/A		24HR	
												10.2 ft	

Elevation (ft)	Depth (ft)	MATERIAL DESCRIPTION	Graphic Log	Sample Depth (ft)	Sample No./Type	1st 6"	2nd 6"	3rd 6"	4th 6"	N Value	<div> <div>● SPT N VALUE ●</div> <div> <div>PL</div> <div>MC</div> <div>LL</div> </div> <div>▲ FINES CONTENT (%)</div> </div>
257.4	63.5	<b>PARTIALLY WEATHERED ROCK (PWR)</b> <b>- SANDY SILT (ML)</b> - very hard, moist, light gray (7.5YR 7/1), mostly low plasticity fines, some fine to medium sands.		63.5	SS-16	23	29	50	4"	100	
252.4	68.5	<b>PIEDMONT RESIDUUM - SILTY SAND (SM)</b> - very dense, moist, very pale brown (10YR 7/4), mostly fine sands, some low plasticity fines.		68.5	SS-17	14	26	34		60	
247.4	73.5	<b>PARTIALLY WEATHERED ROCK (PWR)</b> <b>- SANDY SILT (ML)</b> - hard, wet, very pale brown (10YR 7/4), mostly low plasticity fines, some fine to medium sands.		73.5	SS-18	50	5"	-		100	
		@ 78.5 feet - brown (10YR 5/3).		78.5	SS-19	26	50	3"	-	100	

## LEGEND

Continued Next Page

SAMPLER TYPE		DRILLING METHOD	
SS	- Split Spoon	HSA	- Hollow Stem Auger
UD	- Undisturbed Sample	CFA	- Continuous Flight Augers
AWG	- Rock Core, 1-1/8"	DC	- Driving Casing
NQ	- Rock Core, 1-7/8"	RW	- Rotary Wash
CU	- Cuttings	RC	- Rock Core
CT	- Continuous Tube		

# SCDOT Soil Test Log

Project ID:		P027662			County:		Lexington/Richland		Boring No.:		B-59		
Site Description:		Carolina Crossroads I-20/26/126 Corridor Improvement Project								Route:		Site 37	
Eng./Geo.:		ELF/MFC		Boring Location:			206+15.30		Offset:		R:154.848		
Elev.:		322.4 ft		Latitude:		34.039279		Longitude:		-81.092863		Date Started:	
Total Depth:		119.6 ft		Soil Depth:		110 ft		Core Depth:		9.6 ft		Date Completed:	
Bore Hole Diameter (in):		3.5		Sampler Configuration			Liner Required:		Y (N)		Liner Used:		
Drill Machine:		CME 55		Drill Method:		RW		Hammer Type:		Automatic		Energy Ratio:	
Core Size:		NQ		Driller:		T. Miller		Groundwater:		TOB N/A		24HR	
												10.2 ft	

Elevation (ft)	Depth (ft)	MATERIAL DESCRIPTION	Graphic Log	Sample Depth (ft)	Sample No./Type	1st 6"	2nd 6"	3rd 6"	4th 6"	N Value	<div> <div>● SPT N VALUE ●</div> <div> <div>PL</div> <div>MC</div> <div>LL</div> </div> <div>▲ FINES CONTENT (%)</div> </div>
237.4	83.5	@ 83.5 feet - trace gravel-sized rock fragments.		83.5	SS-20	3250/5"	-			100	
232.4	88.5	<b>PIEDMONT RESIDUUM - SANDY SILT (ML)</b> - hard, moist, dark grayish-brown (10YR 4/2), mostly low plasticity fines, some fine to medium sands, trace gravel-sized rock fragments.		88.5	SS-21	33	37	40		77	
227.4	93.5	<b>PARTIALLY WEATHERED ROCK (PWR) - SANDY SILT (ML)</b> - very hard, moist, dark grayish-brown (10YR 4/2), mostly low plasticity fines, some fine to medium sands, trace gravel-sized rock fragments.		93.5	SS-22	19	49	50/2"		100	
	98.5			98.5	SS-23	50/2"	-			100	

## LEGEND

Continued Next Page

SAMPLER TYPE		DRILLING METHOD	
SS - Split Spoon	NQ - Rock Core, 1-7/8"	HSA - Hollow Stem Auger	RW - Rotary Wash
UD - Undisturbed Sample	CU - Cuttings	CFA - Continuous Flight Augers	RC - Rock Core
AWG - Rock Core, 1-1/8"	CT - Continuous Tube	DC - Driving Casing	

# SCDOT Soil Test Log

<b>Project ID:</b>	P027662	<b>County:</b>	Lexington/Richland	<b>Boring No.:</b>	B-59
<b>Site Description:</b>	Carolina Crossroads I-20/26/126 Corridor Improvement Project			<b>Route:</b>	Site 37
<b>Eng./Geo.:</b>	ELF/MFC	<b>Boring Location:</b>	206+15.30	<b>Offset:</b>	R:154.848
<b>Elev.:</b>	322.4 ft	<b>Latitude:</b>	34.039279	<b>Longitude:</b>	-81.092863
<b>Date Started:</b>	1/15/2018				
<b>Total Depth:</b>	119.6 ft	<b>Soil Depth:</b>	110 ft	<b>Core Depth:</b>	9.6 ft
<b>Date Completed:</b>	1/19/2018				
<b>Bore Hole Diameter (in):</b>	3.5	<b>Sampler Configuration</b>	<b>Liner Required:</b> Y (N)		<b>Liner Used:</b> Y (N)
<b>Drill Machine:</b>	CME 55	<b>Drill Method:</b>	RW	<b>Hammer Type:</b>	Automatic
<b>Energy Ratio:</b>	84.1%				
<b>Core Size:</b>	NQ	<b>Driller:</b>	T. Miller	<b>Groundwater:</b>	TOB N/A
<b>24HR</b>	10.2 ft				

Elevation (ft)	Depth (ft)	MATERIAL DESCRIPTION	Graphic Log	Sample Depth (ft)	Sample No./Type	1st 6"	2nd 6"	3rd 6"	4th 6"	N Value	<div> <div>● SPT N VALUE ●</div> <div> <div>PL X</div> <div>MC O</div> <div>LL X</div> </div> <div>▲ FINES CONTENT (%)</div> <div>0 10 20 30 40 50 60 70 80 90</div> </div>
217.4				103.5	SS-24	50/5"	-			100	
212.4				108.5	SS-25	3150/1"	-			100	
111.0		Tri-Cone Bit Refusal at 111 feet. Install NW Casing to 111 feet for NQ wireline coring.		111.0							
		For discontinuity descriptors, see discontinuity worksheet.			RC-1						
207.4		<b>METAMORPHIC BEDROCK - SCHIST</b> - pale olive (10Y 6/4), fine grained to very fine grained, foliated, highly to completely weathered, weak rock, low core recoveries likely due to seams of completely weathered rock or residual soil washed away by drilling process.		114.6							
		RC-1 : Rec= 14.0%, RQD= 0%, GSI= 10-20.			RC-2						
		@ 114.8 feet - yellowish-brown (10YR 5/6), extremely weak rock.									
119.6		RC-2 : Rec= 40.0%, RQD= 0%, GSI= 10-20, RMR = 34.									

## LEGEND

Continued Next Page

SAMPLER TYPE		DRILLING METHOD	
SS	- Split Spoon	HSA	- Hollow Stem Auger
UD	- Undisturbed Sample	CFA	- Continuous Flight Augers
AWG	- Rock Core, 1-1/8"	DC	- Driving Casing
NQ	- Rock Core, 1-7/8"	RW	- Rotary Wash
CU	- Cuttings	RC	- Rock Core
CT	- Continuous Tube		



## Soil Test Log

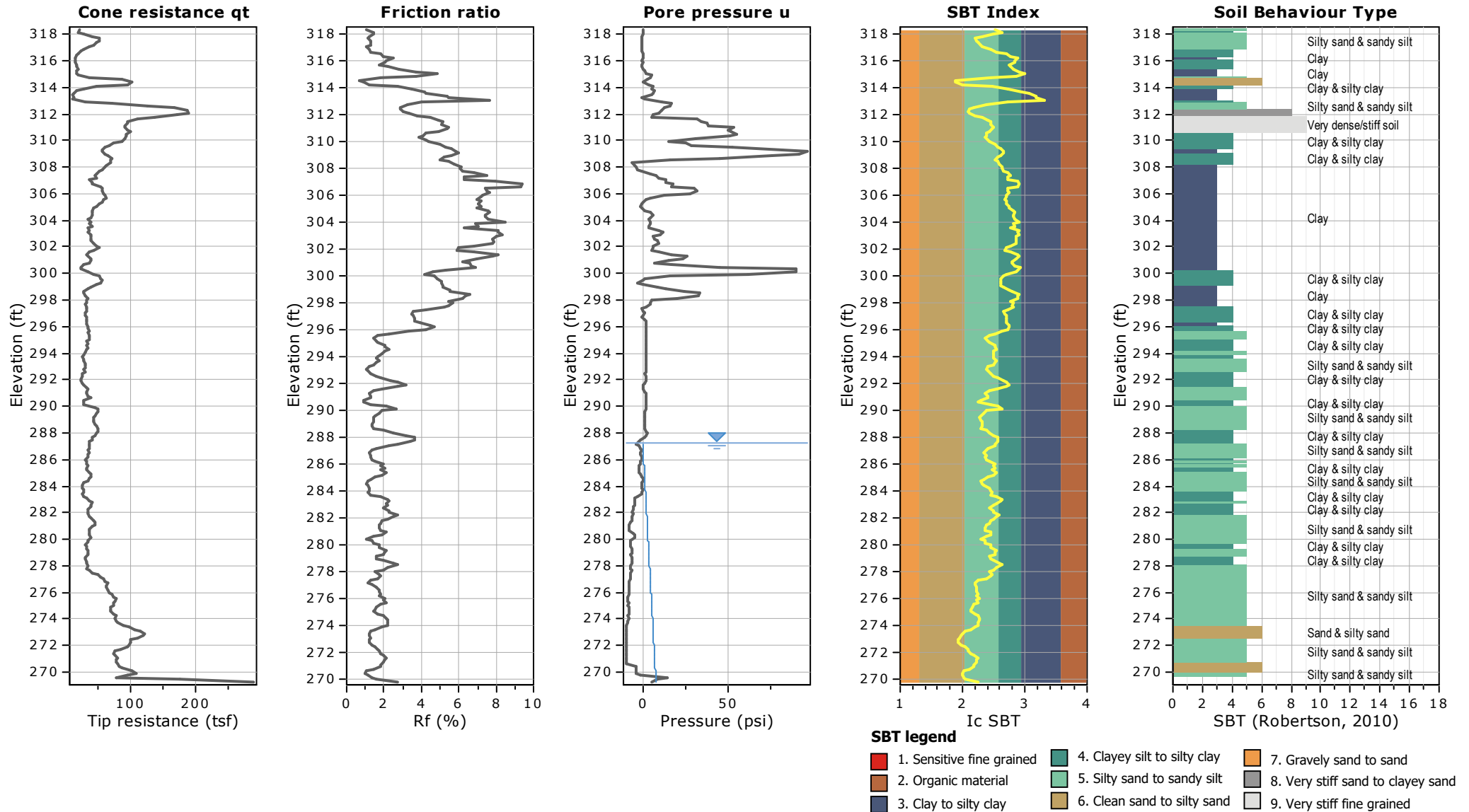
Elevation (ft)	Depth (ft)	MATERIAL DESCRIPTION	Graphic Log	Sample Depth (ft)	Sample No./Type	1st 6" 2nd 6" 3rd 6" 4th 6"	N Value	<div style="text-align: center;"> ● SPT N VALUE ●  PL — MC — LL  X            O            X   ▲ FINES CONTENT (%) </div> 0 10 20 30 40 50 60 70 80 90
197.4		Boring Terminated at 119.6 feet.						
192.4								
187.4								

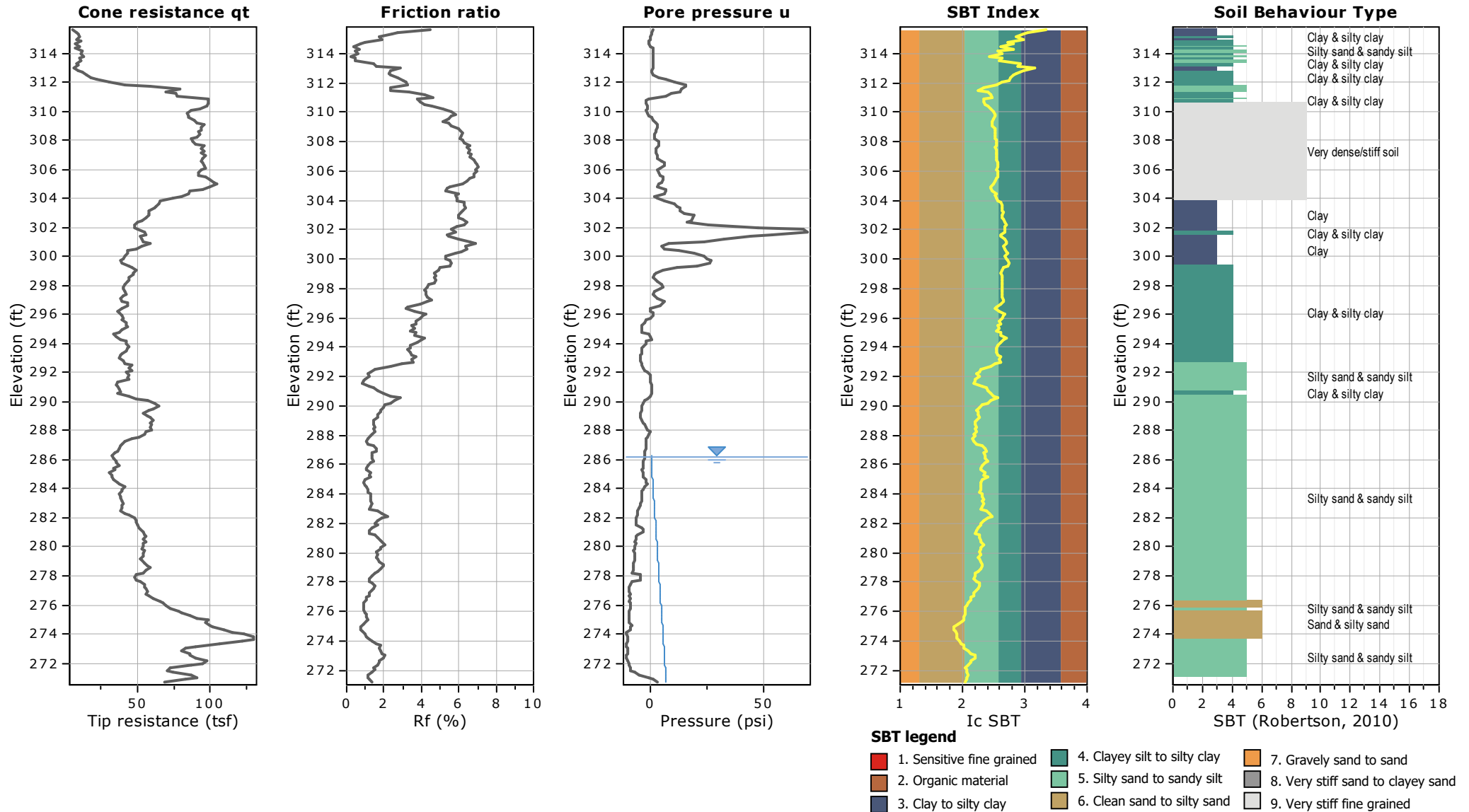
## SAMPLER TYPE

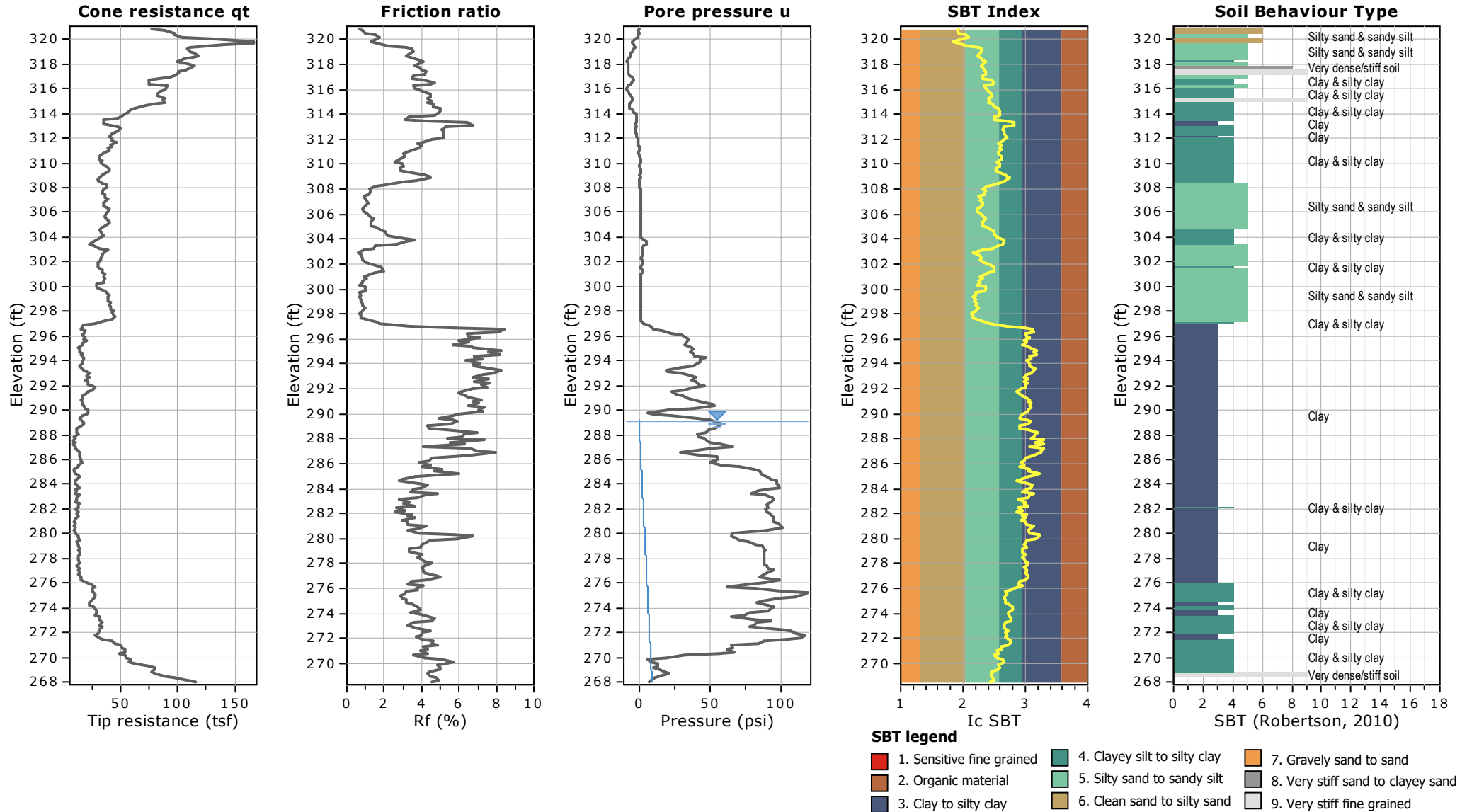
SS - Split Spoon	NQ - Rock Core, 1-7/8"
UD - Undisturbed Sample	CU - Cuttings
AWG - Rock Core, 1-1/8"	CT - Continuous Tube

## DRILLING METHOD

HSA - Hollow Stem Auger                      RW - Rotary Wash  
CFA - Continuous Flight Augers            RC - Rock Core  
DC - Driving Casing







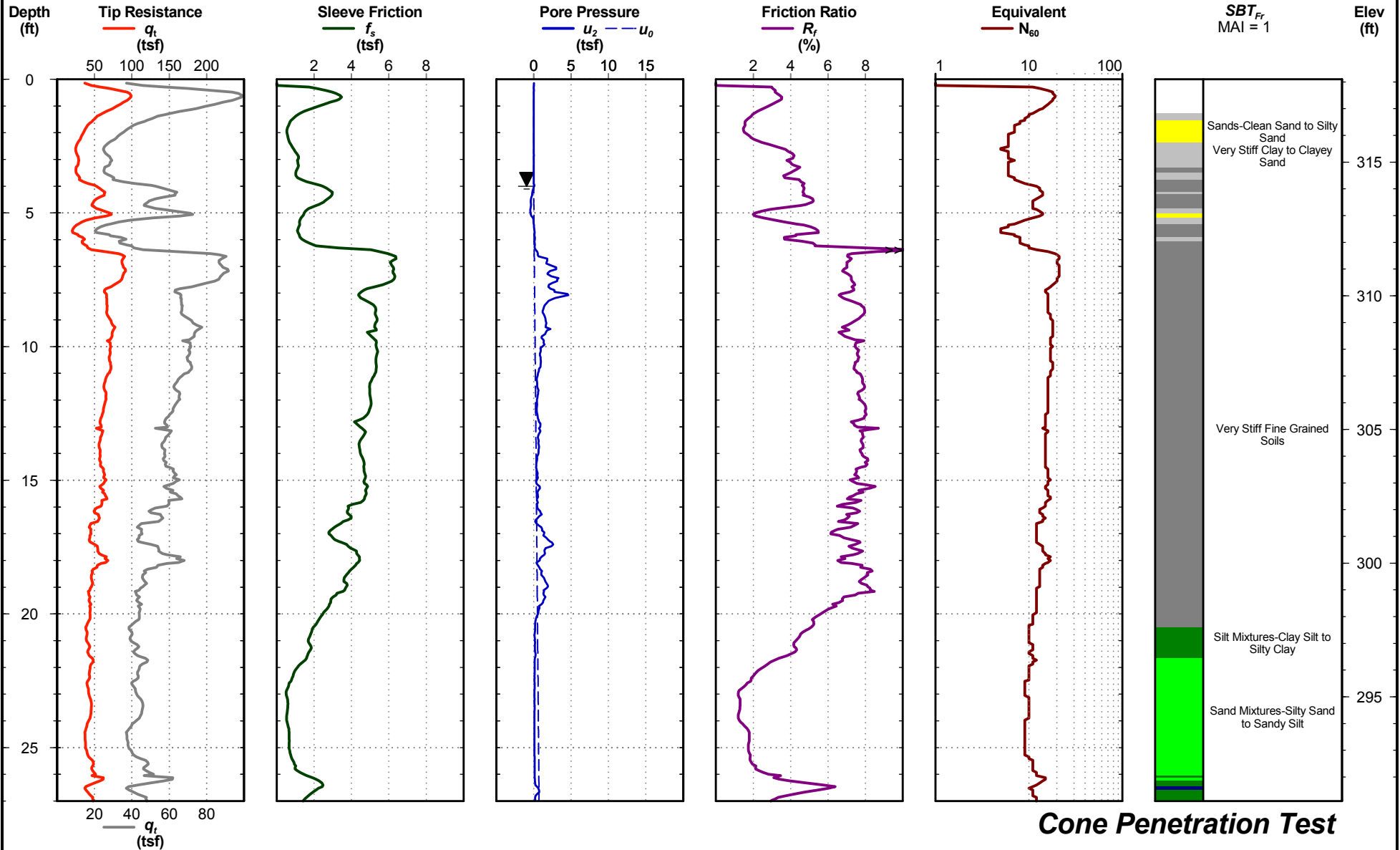


CCR I-20/26/126 Improvement Project  
Lexington/Richland  
S&ME Project No: 1461-16-047

Latitude: 34.039821  
Longitude: -81.093666  
Elevation: 318.1 ft MSL  
Date: May. 21, 2018  
Estimated Water Depth: 4 ft  
Rig/Operator: CPT Truck/D. Watson

**Sounding ID: CPT-B58**

Total Depth: 50.0 ft  
Termination Criteria: Target Depth  
Cone Size: 1.75





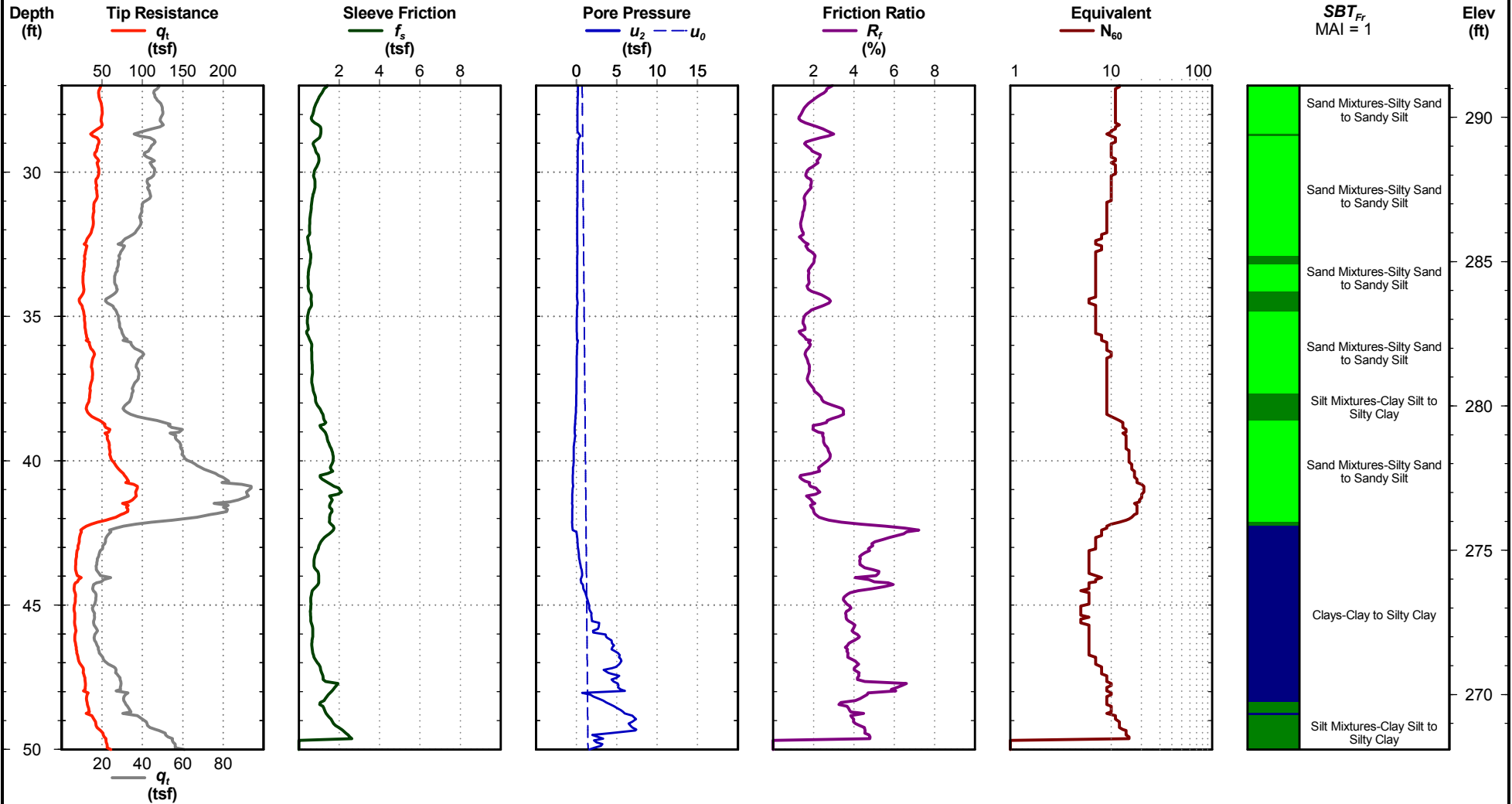


CCR I-20/26/126 Improvement Project  
Lexington/Richland  
S&ME Project No: 1461-16-047

Latitude: 34.039821  
Longitude: -81.093666  
Elevation: 318.1 ft MSL  
Date: May. 21, 2018  
Estimated Water Depth: 4 ft  
Rig/Operator: CPT Truck/D. Watson

**Sounding ID: CPT-B58**

Total Depth: 50.0 ft  
Termination Criteria: Target Depth  
Cone Size: 1.75



**Cone Penetration Test**

Electronic Filename: B-58A(005)\_PD.ECP